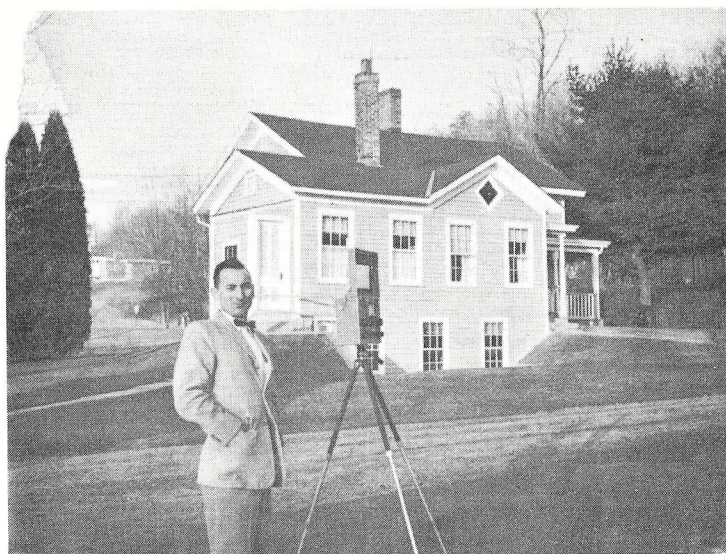


23



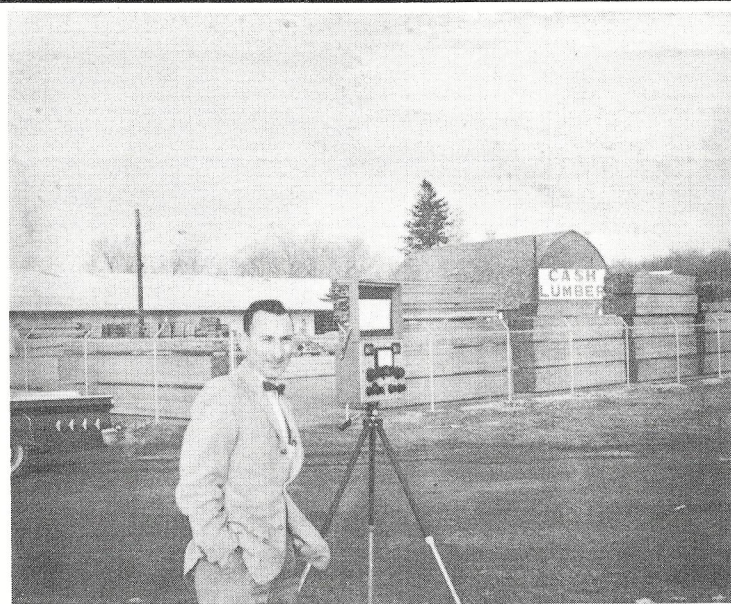
MONITORING POINT No. 2
RADIAL N 220° E



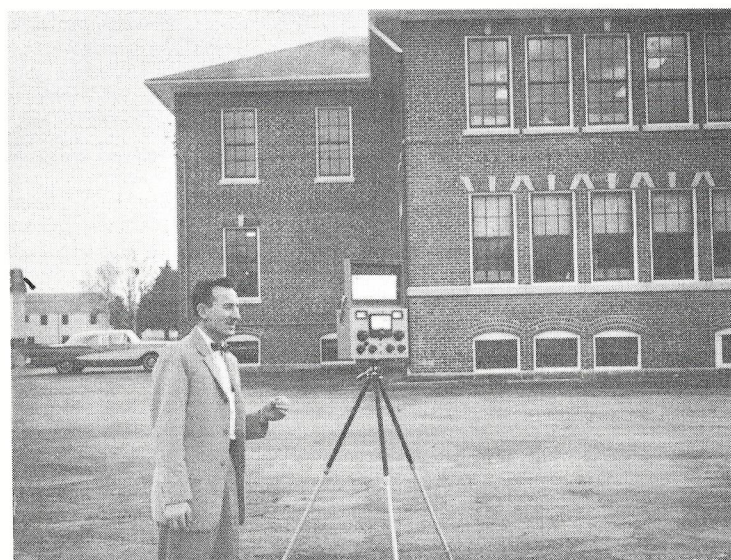
MONITORING POINT No. 3
RADIAL N 224° E

PHOTOGRAPHS SHOWING MONITORING
POINTS FOR WNLC, NEW LONDON, CONNECTICUT
1510 KC - 5 KW - DA-2
JANUARY 1962

24

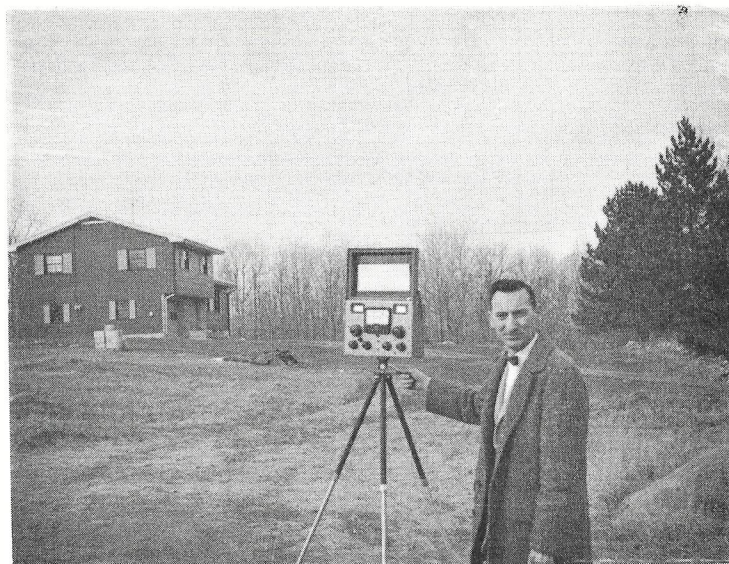


MONITORING POINT No. 4
RADIAL N 244° E

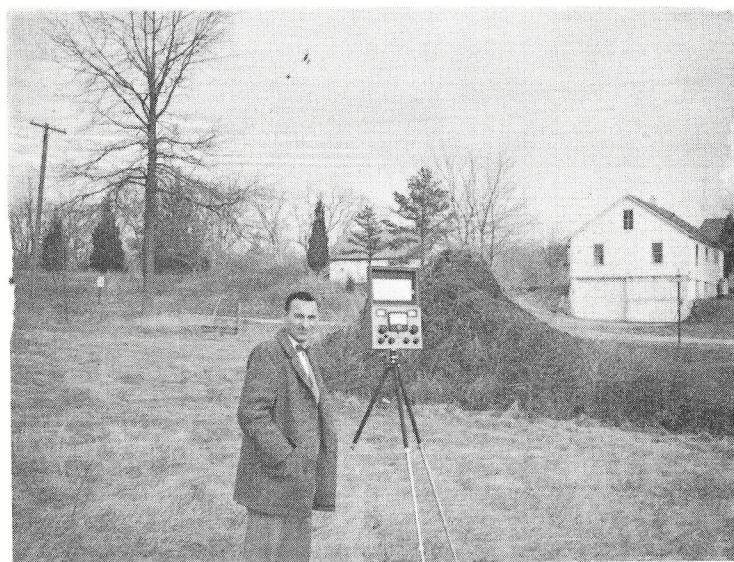


MONITORING POINT No. 5
RADIAL N 255° E

PHOTOGRAPHS SHOWING MONITORING
POINTS FOR WNLC, NEW LONDON, CONNECTICUT
1510 KC - 5 KW - DA-2
JANUARY 1962



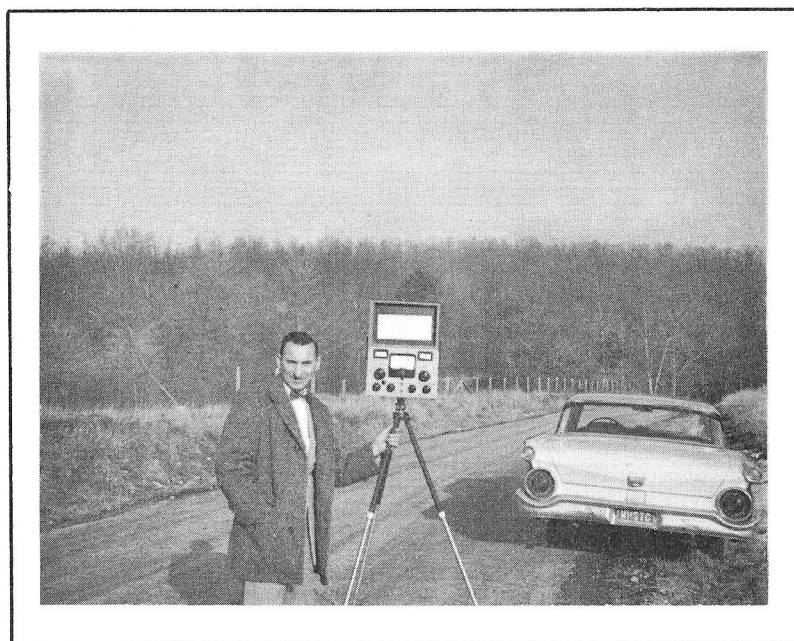
MONITORING POINT No. 6
RADIAL N 280° E



MONITORING POINT No. 7
RADIAL N 305° E

PHOTOGRAPHS SHOWING MONITORING
POINTS FOR WNLC, NEW LONDON, CONNECTICUT
1510 KC - 5 KW - DA-2
JANUARY 1962

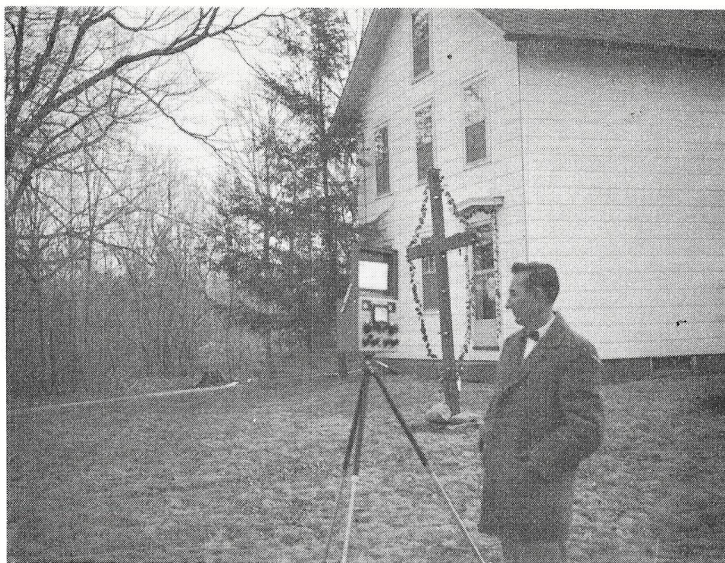
26



MONITORING POINT No. 8
RADIAL N 330° E

PHOTOGRAPHS SHOWING MONITORING
POINTS FOR WNLC, NEW LONDON, CONNECTICUT
1510 KC - 5 KW - DA-2
JANUARY 1962

29



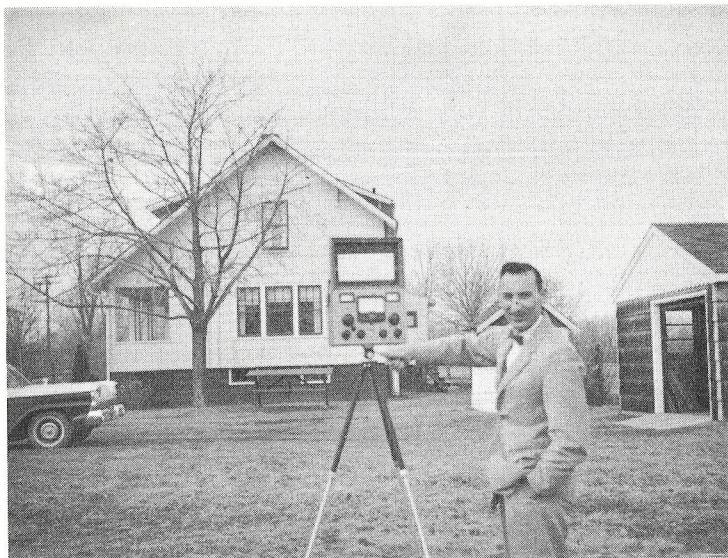
MONITORING POINT No. 9
RADIAL N 0° E



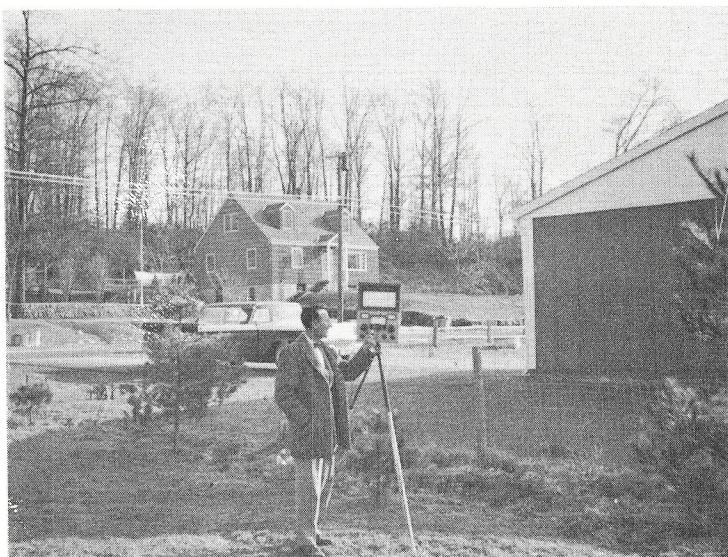
MONITORING POINT No. 10
RADIAL N 24° E

PHOTOGRAPHS SHOWING MONITORING
POINTS FOR WNLC, NEW LONDON, CONNECTICUT
1510 KC - 5 KW - DA-2
JANUARY 1962

28



MONITORING POINT No. II
RADIAL N 60° E



MONITORING POINT No. I
RADIAL N 210° E

PHOTOGRAPHS SHOWING MONITORING
POINTS FOR WNLC, NEW LONDON, CONNECTICUT
1510 KC - 5 KW - DA-2
JANUARY 1962