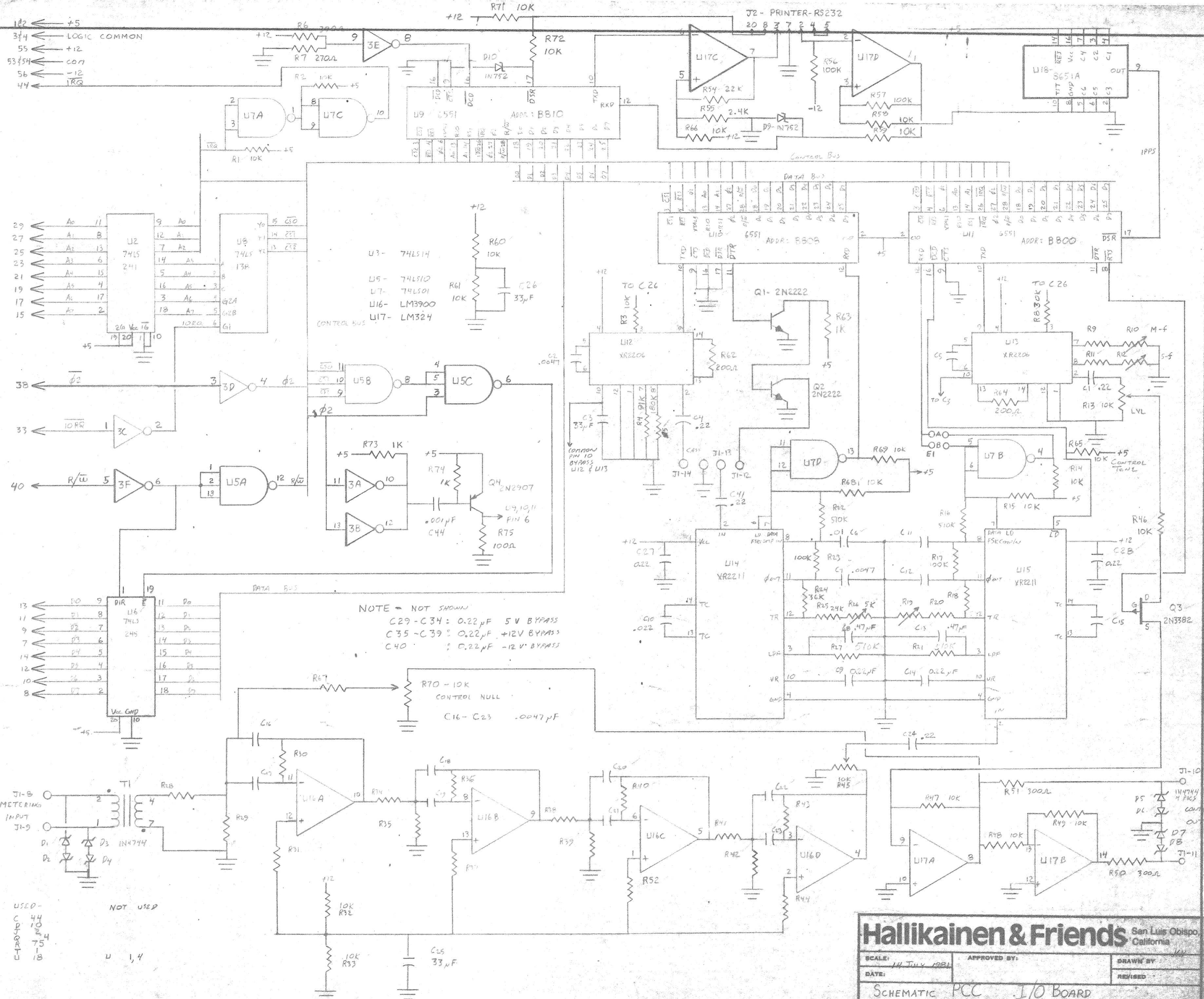


STD BUS EDGE CONNECTOR

ODD - COMP SIDE  
EVEN - TRACE SIDE



NOTE - NOT SHOWN  
C29 - C34 : 0.22 μF 5V BYPASS  
C35 - C39 : 0.22 μF +12V BYPASS  
C40 : 0.22 μF -12V BYPASS  
C16 - C23 : 0.0047 μF

LAST USED	NOT USED
C 44	U 1, 4
U 10	
R 75	
I 18	

**Hallikainen & Friends** San Luis Obispo, California

SCALE: 1/4" July 1981 APPROVED BY: DRAWN BY: [Signature]

DATE: SCHEMATIC PCC I/O BOARD REVISED: [Signature]

P/N 0010-1401