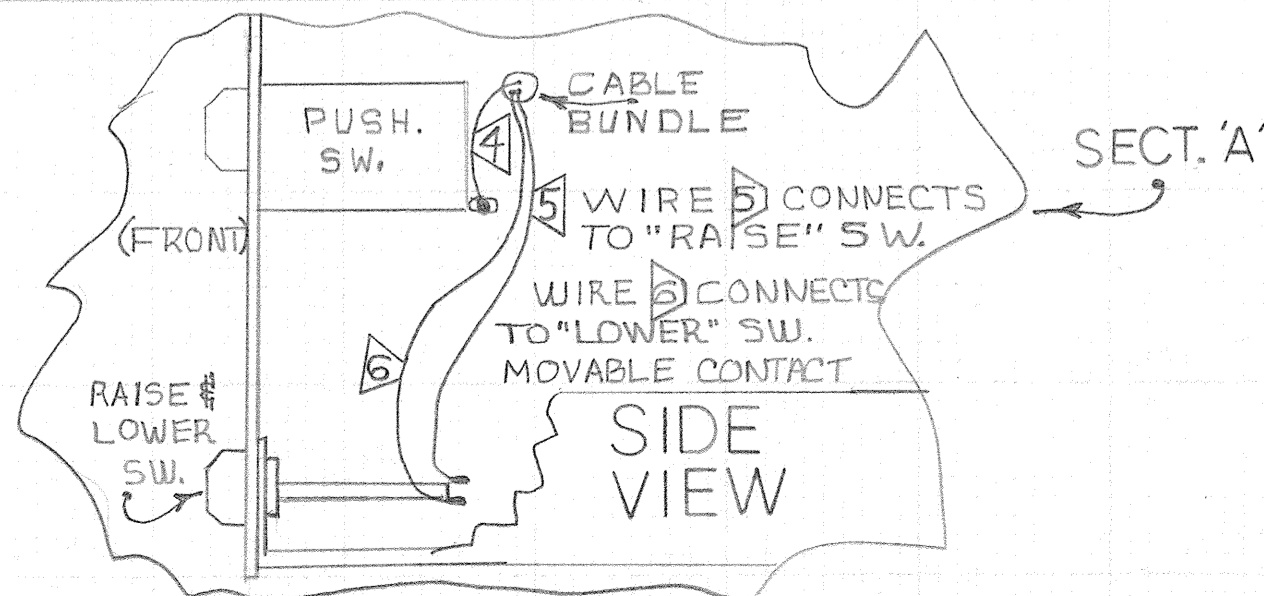
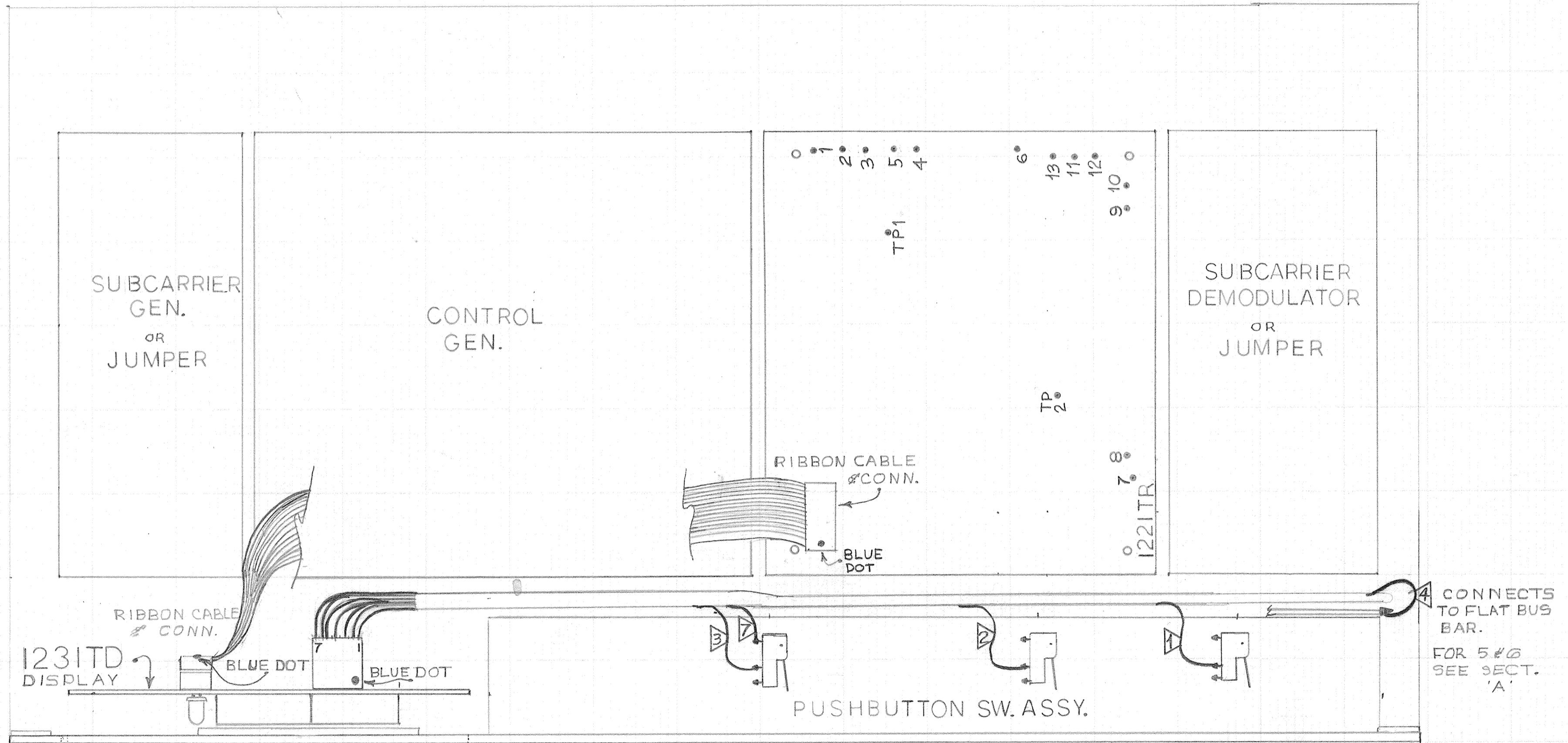


NOTE:

SOME TRC-15A'S HAVE THE CHANNEL SELECT MICROSWITCHES IN DIFFERENT POSITIONS.
 CHECK FOR PROPER SWITCH LOCATION AS BELOW:
 PUSH BUTTON #1. CONNECT WIRE #1 TO THE MICROSWITCH THAT IS ACTIVATED.
 PUSH BUTTON #2. CONNECT WIRE #2 TO THE MICROSWITCH THAT IS ACTIVATED.
 PUSH BUTTON #4. CONNECT WIRE #3 TO THE MICROSWITCH THAT IS ACTIVATED.
 PUSH BUTTON #8. A CONTACT CLOSES TO A BUS CONNECTING THE LAST 8 SWITCHES.
 THIS BUS IS LOW (0 VOLTS) UNLESS BUTTONS 8 THROUGH 15 ARE PRESSED. CONNECT
 WIRE #4 TO THIS BUS.

TOP VIEW



FULL
 MAY 23, '78
 TELEMETRY RCVR. INST.
 PART OF TEL171

FC
 C33-1