

REV.	DESCRIPTION	BY	CHK	AUTH	DATE
A	RELEASED TO PRODUCTION	PER	ECO	282	1-6-55
B	REVISED PER ECO # 282	EI			3-26-57
C	REVISED PER ECO 342	TD			7-16-57
D	REVISED PER ECO 466	TD			8-16-57

ITEM NO.	QTY	DESCRIPTION	REF
		REMOVE ALL BURS AND SHARP EDGES	
		TOLERANCES UNLESS OTHERWISE SPECIFIED	
		.XX ±	
		.XXX ±	
		ANGULAR ±	
		DO NOT SCALE THIS PRINT	

COMPONENT DESIGNATOR	VALUE
FIRST	LAST DELETED
C1	C33
CR1	CR13
L1	L9
Q1	Q1
R1	R22
Y1	Y1
Z1	Z8

ITEM NO.	QTY	DESCRIPTION	REF
		REMOVE ALL BURS AND SHARP EDGES	
		TOLERANCES UNLESS OTHERWISE SPECIFIED	
		.XX ±	
		.XXX ±	
		ANGULAR ±	
		DO NOT SCALE THIS PRINT	

ITEM NO.	QTY	DESCRIPTION	REF
		REMOVE ALL BURS AND SHARP EDGES	
		TOLERANCES UNLESS OTHERWISE SPECIFIED	
		.XX ±	
		.XXX ±	
		ANGULAR ±	
		DO NOT SCALE THIS PRINT	

ITEM NO.	QTY	DESCRIPTION	REF
		REMOVE ALL BURS AND SHARP EDGES	
		TOLERANCES UNLESS OTHERWISE SPECIFIED	
		.XX ±	
		.XXX ±	
		ANGULAR ±	
		DO NOT SCALE THIS PRINT	

ITEM NO.	QTY	DESCRIPTION	REF
		REMOVE ALL BURS AND SHARP EDGES	
		TOLERANCES UNLESS OTHERWISE SPECIFIED	
		.XX ±	
		.XXX ±	
		ANGULAR ±	
		DO NOT SCALE THIS PRINT	

ITEM NO.	QTY	DESCRIPTION	REF
		REMOVE ALL BURS AND SHARP EDGES	
		TOLERANCES UNLESS OTHERWISE SPECIFIED	
		.XX ±	
		.XXX ±	
		ANGULAR ±	
		DO NOT SCALE THIS PRINT	

ITEM NO.	QTY	DESCRIPTION	REF
		REMOVE ALL BURS AND SHARP EDGES	
		TOLERANCES UNLESS OTHERWISE SPECIFIED	
		.XX ±	
		.XXX ±	
		ANGULAR ±	
		DO NOT SCALE THIS PRINT	

ITEM NO.	QTY	DESCRIPTION	REF
		REMOVE ALL BURS AND SHARP EDGES	
		TOLERANCES UNLESS OTHERWISE SPECIFIED	
		.XX ±	
		.XXX ±	
		ANGULAR ±	
		DO NOT SCALE THIS PRINT	

NOTES: IN CASE OF OTHERWISE SPECIFIED, (1) DC, (2) RESISTOR - VALUES IN OHMS, (3) CAPACITOR - VALUES IN P.F., (4) WAVE, (5) INDUCTOR - VALUES IN MICROHENRIES, (6) FACTOR - VALUES IN PERCENT, (7) TYPICAL, (8) VOLTAGE - VALUES IN VOLTS, (9) TYPICAL, (10) D.C. VOLTAGE LEVELS ARE TYPICAL FOR INSTRUMENT IN SCA MOD CAL MODE.

6601-1390

6601-1390

6601-1390

6601-1390

6601-1390

6601-1390

6601-1390

6601-1390

6601-1390

6601-1390

6601-1390

6601-1390

6601-1390

6601-1390

6601-1390

6601-1390

6601-1390

6601-1390

6601-1390

6601-1390

6601-1390

6601-1390

6601-1390

6601-1390

6601-1390

6601-1390

6601-1390

6601-1390

6601-1390

6601-1390

6601-1390

6601-1390

6601-1390

6601-1390

6601-1390

6601-1390

6601-1390

6601-1390

6601-1390

6601-1390

6601-1390

6601-1390

6601-1390

6601-1390

6601-1390

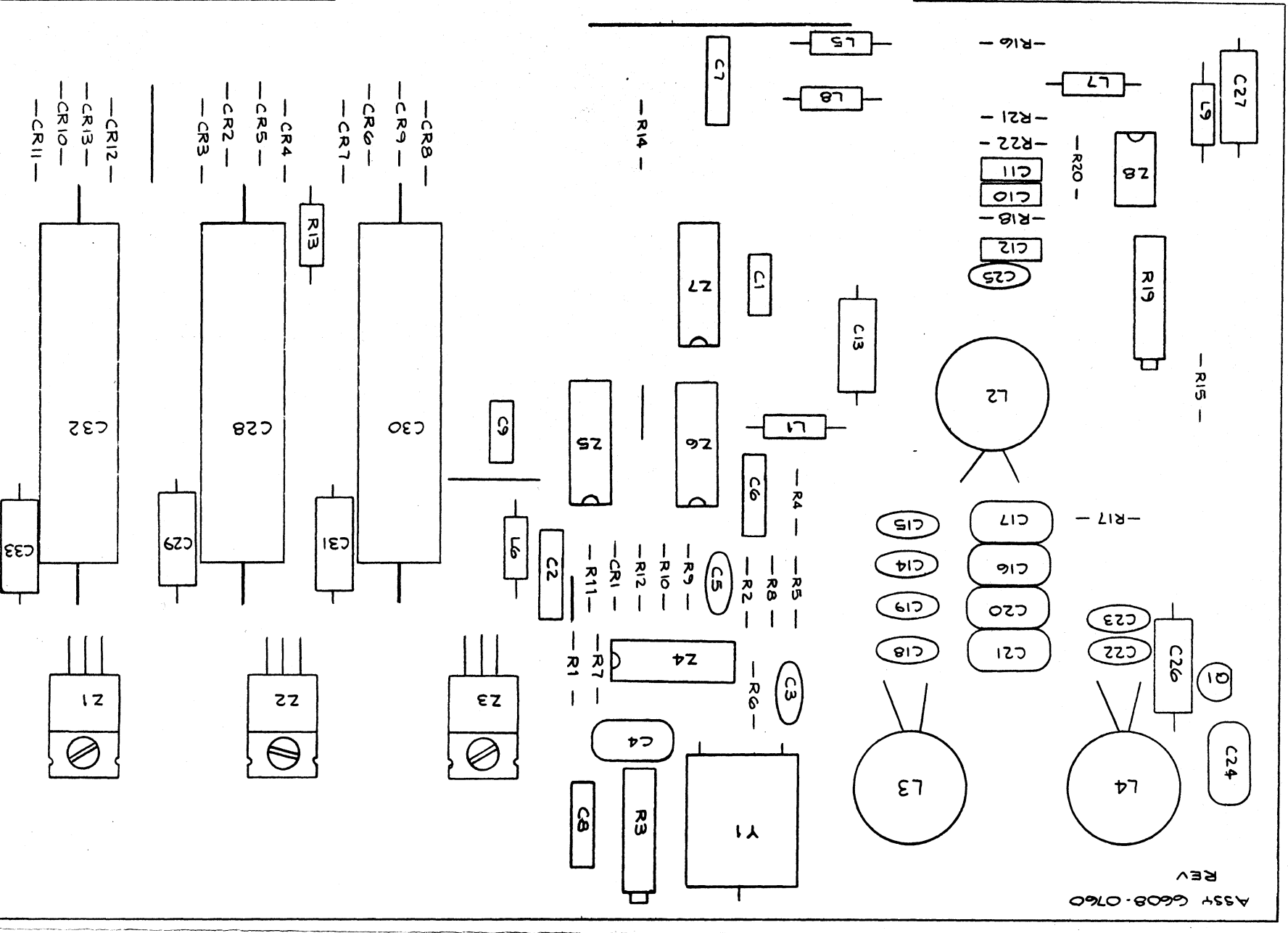
6601-1390

6601-1390

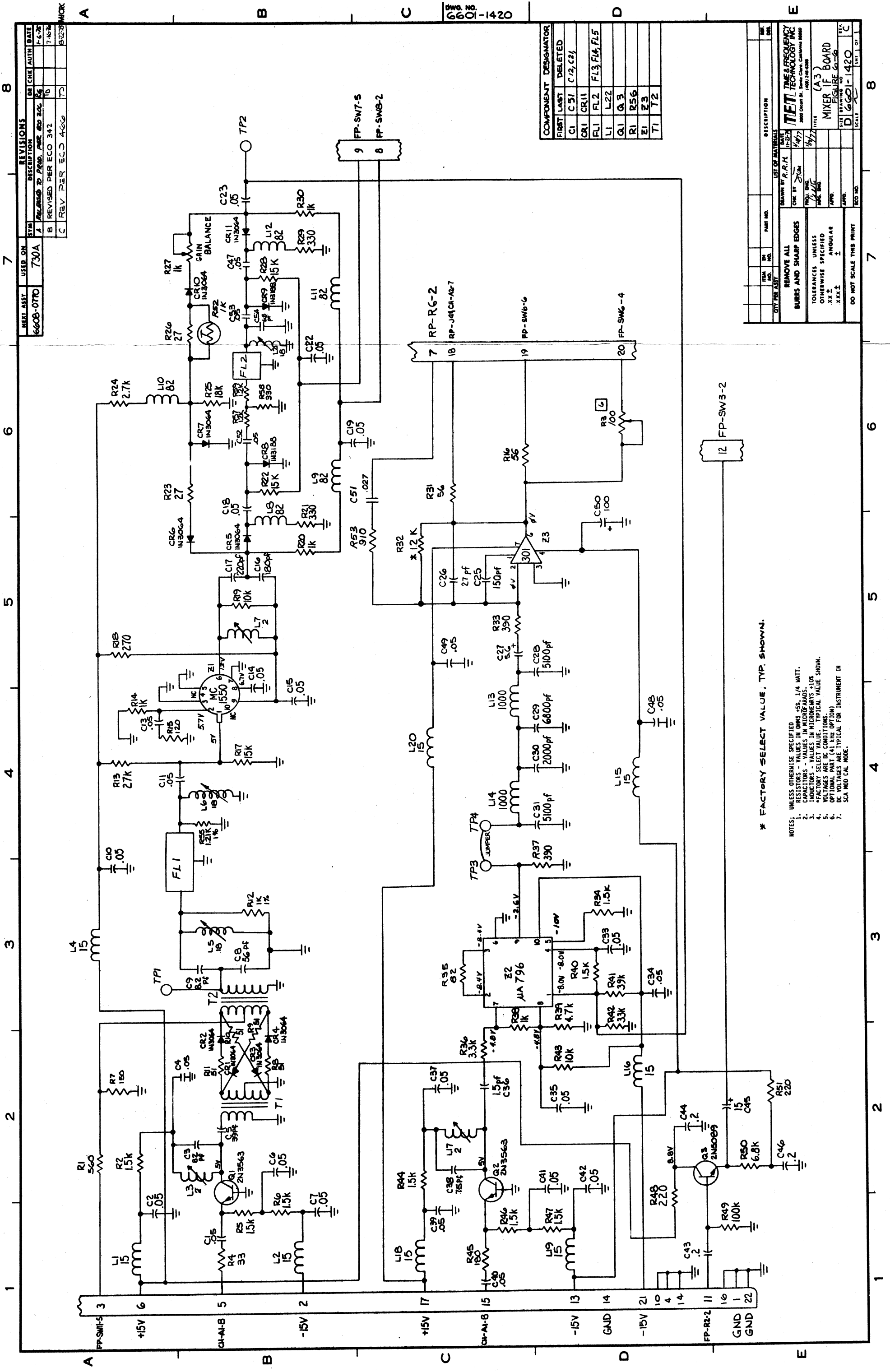
6601-1390

Ckt. Ref.	Description	TFT Stock No.
C1	Cap Cer Disc .2 Mfd	1005-2029
C2	Cap Cer Disc .2 Mfd	1005-2029
C3	Cap Mica 33 PF	1001-0330
C4	Cap Poly .0022 Mfd 100V	1002-0222
C5	Cap Cer Disc .2 Mfd	1001-0471
C6	Cap Cer Disc .2 Mfd	1005-2029
C7	Cap Cer Disc .2 Mfd	1005-2029
C8	Cap Cer Disc .2 Mfd	1005-2029
C9	Cap Cer Disc .2 Mfd	1005-2029
C10	Cap Cer Disc .2 Mfd	1005-2029
C11	Cap Cer Disc .2 Mfd	1005-2029
C12	Cap Mica 2000 PF	1001-0202
C13	Cap Mica 750 PF	1001-0751
C14	Cap Mica 2700 PF	1001-0272
C15	Cap Mica 520 PF	1001-0521
C16	Cap Mica 1000 PF	1001-0621
C17	Cap Mica 370 PF	1001-0371
C18	Cap Mica 2000 PF	1001-0202
C19	Cap Mica 240 PF	1001-0242
C20	Cap Mica 18 PF	1001-0180
C21	Cap Mica 2700 PF	1001-0272
C22	Cap Mica 120 PF	1001-0121
C23	Cap Elect 1.0 Mfd 25V	1010-0110
C24	Cap Tan 10 Mfd 20V 10%	1008-0101
C25	Cap Elect 500 Mfd 50V	1010-0501
C26	Cap Tan 10 Mfd 20V 10%	1008-0101
C27	Cap Elect 500 Mfd 50V	1010-0501
C28	Cap Tan 10 Mfd 20V 10%	1008-0101
C29	Cap Elect 500 Mfd 50V	1010-0501
C30	Cap Tan 10 Mfd 20V 10%	1008-0101
C31	Cap Elect 1200 Mfd 15V	1010-1201
C32	Cap Tan 10 Mfd 20V 10%	1008-0101
C33	Cap Tan 10 Mfd 20V 10%	1008-0101
C34	Dio Rect 1N4004	1281-3064
C35	Dio Rect 1N4002	1284-4002
C36	Dio Rect 1N4002	1284-4002
C37	Dio Rect 1N4002	1284-4002
C38	Dio Rect 1N4002	1284-4002
C39	Dio Rect 1N4002	1284-4002

Ckt. Ref.	Description	TFT Stock No.
CR10	Dio Rect 1N4002	1284-4002
CR11	Dio Rect 1N4002	1284-4002
CR12	Dio Rect 1N4002	1284-4002
CR13	Choke RF 15UH	1530-0150
L1	M/L Ind Var 313T	1550-0313
L2	M/L Ind Var 313T	1550-0313
L3	M/L Ind Var 370T	1550-0374
L4	Choke RF 15UH	1530-0150
L5	Choke RF 15UH	1530-0150
L6	Choke RF 15UH	1530-0150
L7	Choke RF 15UH	1530-0150
L8	Choke RF 15UH	1530-0150
L9	Xistor 2M5089	1271-5089
Q1	Res Car Comp 1/4W 5% 1.5K	1065-1501
R1	Res Car Comp 1/4W 5% 1K	1065-1001
R2	Res Var PC MT 100 10T	1065-0100
R3	Res Car Comp 1/4W 5% 5.6K	1065-5601
R4	Res Car Comp 1/4W 5% 1K	1065-1001
R5	Res Car Comp 1/4W 5% 10K	1065-1002
R6	Res Car Comp 1/4W 5% 2.7K	1065-2701
R7	Res Car Comp 1/4W 5% 470	1065-0470
R8	Res Car Comp 1/4W 5% 15K	1065-1501
R9	Res Car Comp 1/4W 5% 5.6K	1065-5602
R10	Res Car Comp 1/4W 5% 5.6K	1065-5602
R11	Res Car Comp 1/4W 5% 750	1065-0750
R12	Res Car Comp 1/2W 5% 10	1066-0010
R13	Res Car Comp 1/4W 5% 51	1066-0051
R14	Res Car Comp 1/4W 5% 220	1065-0220
R15	Res Car Comp 1/4W 5% 3.3K	1065-3301
R16	Res Car Comp 1/4W 5% 4.7K	1065-4701
R17	Res Car Comp 1/4W 5% 4.7K	1065-4701
R18	Res Var PC MT 1K 10T	1065-1001
R19	Res Car Comp 1/4W 5% 1.2K	1065-1201
R20	Res Car Comp 1/4W 5% 620	1065-0620
R21	Res Car Comp 1/4W 5% 5.6K	1065-5601
R22	Crystal 2.144 Mhz	2400-2144
Y1	I/C LM3401-05	1100-7805
Z1	I/C LM3401-15	1100-7815
Z2	I/C LM3401-15	1100-7815
Z3	I/C CA3064	1100-3064
Z4	I/C SM7493N	1100-7493



Ckt. Ref.	Description	TFT Stock No.
Z6	I/C SM7493N	1100-7493
Z7	I/C SM7400N	1100-7400
Z8	I/C LM741CN	1100-0741
	PC Card Exec	1650-6100
	Rest Stim 1-001.125	2010-6106
	Socket, I/C 8 Pin	2280-1008
	Socket, I/C 9 Pin	2280-1014
	PC Board 730 PS	1600-0760



REV	DATE	DESCRIPTION	BY	CHKD	AUTH
1	7-6-78	RELEASED TO PROD. PER ECO 242			
2	7-16-78	REVISED PER ECO 342			
3	8-22-78	REV PER ECO 400			

COMPONENT	DESIGNATOR
FIRST	LAST
C1	C51
CR1	CR11
FL1	FL2
L1	L22
Q1	Q3
R1	R56
Z1	Z3
T1	T2

REV	DATE	DESCRIPTION	BY	CHKD	AUTH
1	7-6-78	RELEASED TO PROD. PER ECO 242			
2	7-16-78	REVISED PER ECO 342			
3	8-22-78	REV PER ECO 400			

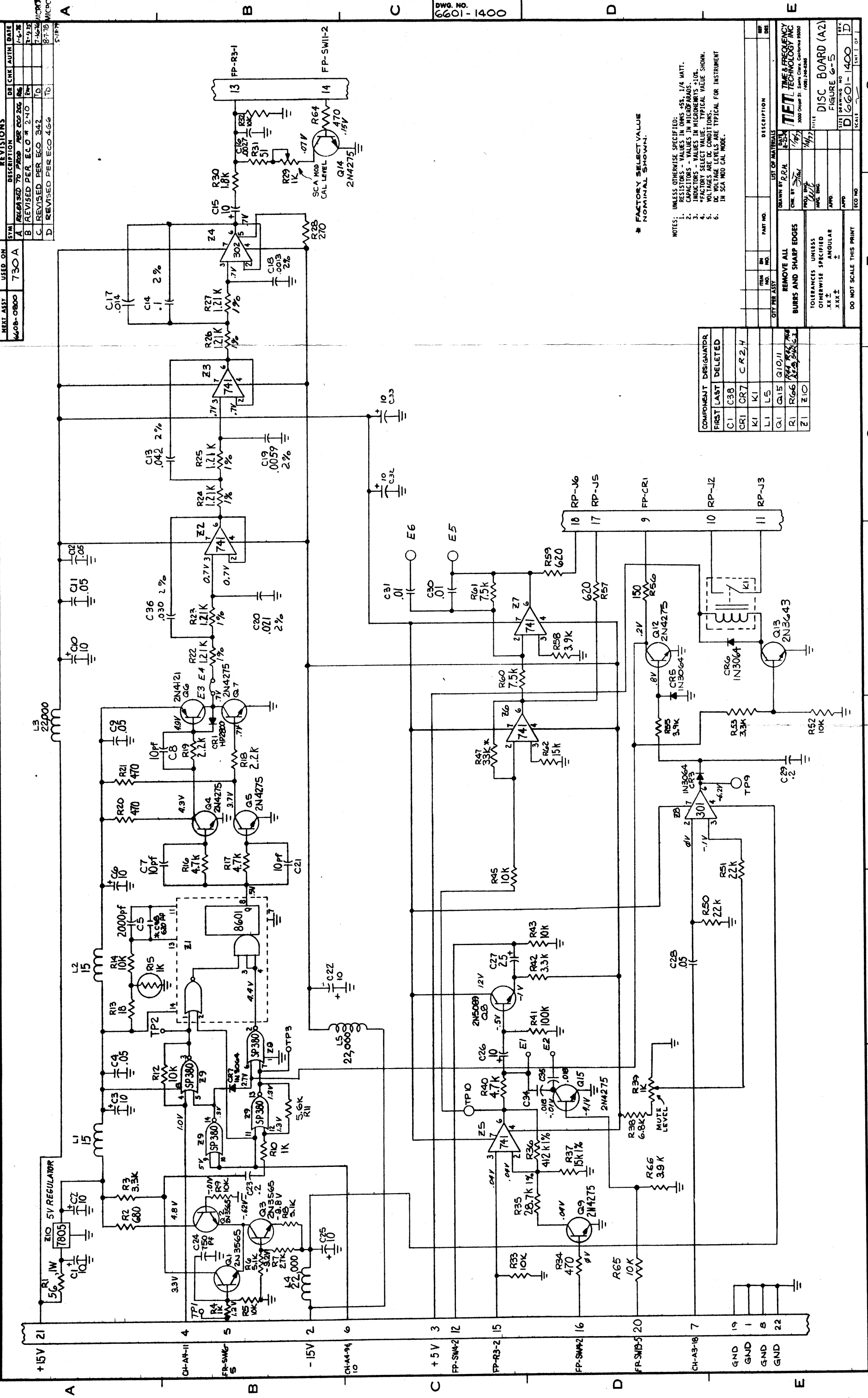
\* FACTORY SELECT VALUE, TYP. SHOWN.

- 1. UNLESS OTHERWISE SPECIFIED RESISTORS - VALUES IN OHMS
- 2. CAPACITORS - VALUES IN MICROSECONDS
- 3. INDUCTORS - VALUES IN MICROMHYS +10%
- 4. \*FACTORY SELECT VALUE. TYPICAL VALUE SHOWN.
- 5. VOLTAGES ARE DC CONDITIONS.
- 6. OPTIONAL PART (41 KHZ OPTION)
- 7. DC VOLTAGES ARE TYPICAL FOR INSTRUMENT IN SCA MOD CAL MODE.

6608-0770-1420



8  
7  
6  
5  
4  
3  
2  
1



REVISIONS

SYM	DESCRIPTION	DATE	AUTH	DATE
A	REDESIGNED TO PREPARE FOR ECO # 240	10-1-78		
B	REVISED PER ECO # 240	10-1-78		
C	REVISED PER ECO # 342	7-16-78		
D	REVISED PER ECO # 466	8-7-78		

4408-0800 730 A

COMPONENT DESIGNATOR

FIRST	LAST	DELETED
C1	C38	
C1	CR7	
K1	K1	
L1	L5	
Q1	Q15	
R1	RG6	
Z1	Z10	

REMOVE ALL BURS AND SHARP EDGES

TOLERANCES UNLESS OTHERWISE SPECIFIED

.XX ±

ANGULAR ±

DO NOT SCALE THIS PRINT

ECO NO. 1400

SCALE 1:1

DATE 10/1/78

DRAWN BY R.R.H.

CHEK BY J.S.H.

PROJ. ENG. J.S.H.

APP. J.S.H.

DESCRIPTION

DISC BOARD (A2)

FIGURE 6-5

TIME & FREQUENCY TECHNOLOGY INC.

3000 Orange St. Santa Clara, California 95050

TEL: (408) 253-3085

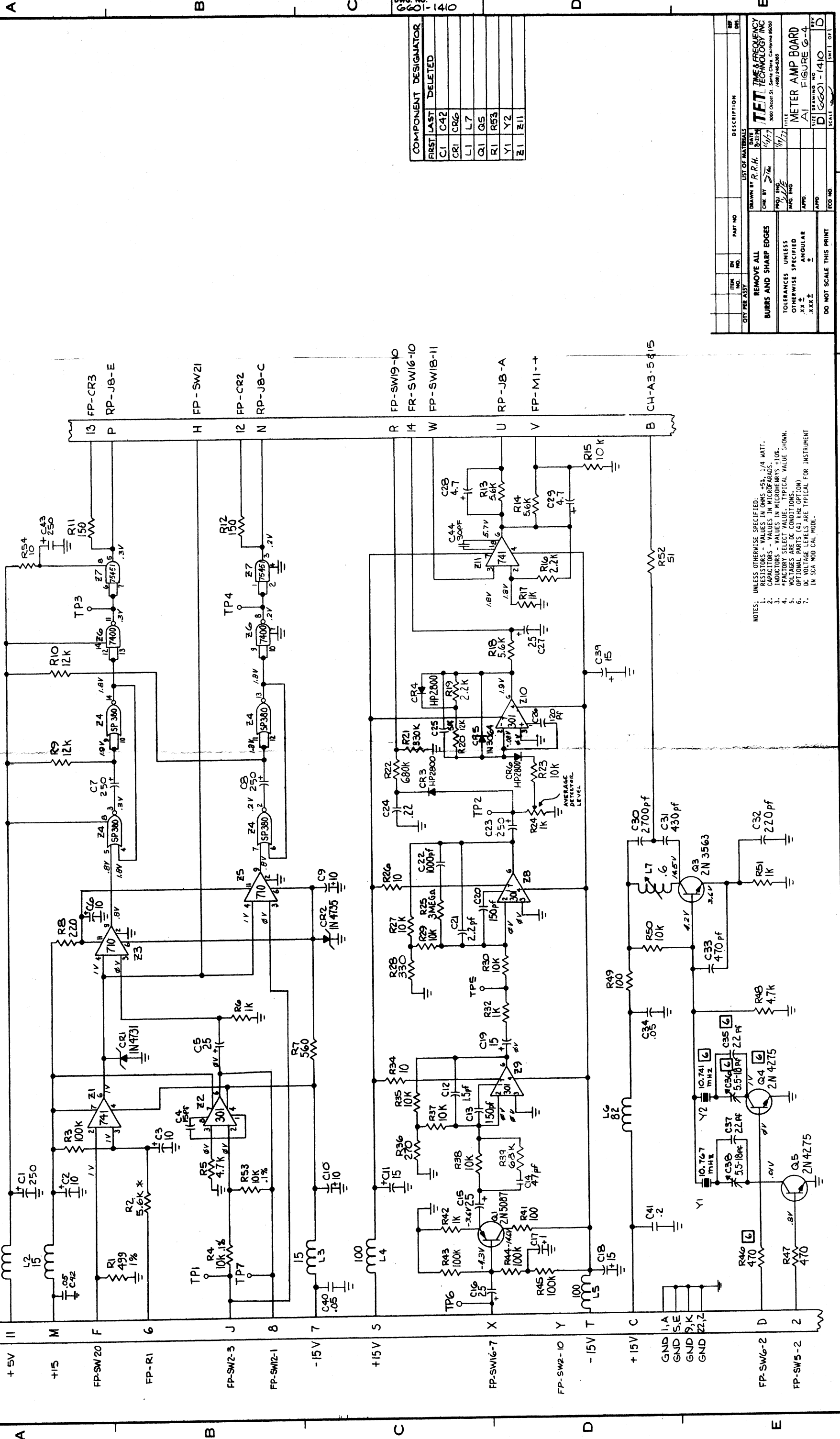
FIG. NO. 1400

REV. D

8  
7  
6  
5  
4  
3  
2  
1



REV. NO.	DESCRIPTION	DATE	BY	CHK	APP
A	RELEASED TO PROD PER ECO 224	1-6-75			
B	REVISED PER ECO NO. 310	4-8-75			
C	REVISED PER ECO 342	7-16-75			
D	REVISED PER ECO 426	8-7-75			



7  
8  
6  
5  
4  
3  
2  
1

A B C D E  
1 2 3 4 5 6 7 8

DWG. NO. 6601-1410

COMPONENT DESIGNATOR	
FIRST	LAST
C1	C42
C1	CR6
L1	L7
Q1	Q5
R1	R53
Y1	Y2
Z1	Z11

ITEM NO.	REV. NO.	PART NO.	DESCRIPTION	REV.	DATE
			REMOVE ALL BURRS AND SHARP EDGES		
			TOLERANCES UNLESS OTHERWISE SPECIFIED		
			XX ± ANGULAR		
			XXX ±		
			DO NOT SCALE THIS PRINT		

NOTES: UNLESS OTHERWISE SPECIFIED:  
 1. RESISTORS - VALUES IN OHMS ±5%, 1/4 WATT.  
 2. CAPACITORS - VALUES IN MICROFARADS.  
 3. INDUCTORS - VALUES IN MICROHENRYS ±10%.  
 4. \*FACTORY SELECT VALUE, TYPICAL VALUE SHOWN.  
 5. VOLTAGES ARE DC CONDITIONS.  
 6. OPTIONAL PARTS (41 KHZ OPTION)  
 7. DC VOLTAGE LEVELS ARE TYPICAL FOR INSTRUMENT IN SCA MOD CAL MODE.

TIME FREQUENCY TECHNOLOGY INC  
 3000 Olcott St. Santa Clara, California 95050  
 (408) 246-6285  
 METER AMP BOARD  
 AI FIGURE G-4  
 D 6601-1410  
 SCALE 1:1  
 INT 011

Meter Amp Board Assembly # 6608-0780

Meter Amp Board Model 730A Assembly # 6608-0780

Ckt. Ref.	Description	TFT Stock No.
C1	Cap Elect 250UF 6V	1010-0251
C2	Cap Tan 10 Mfd 20V 10%	1008-0101
C3	Cap Mica 15 PF	1001-0150
C4	Cap Elect 25 Mfd 6V	1010-0250
C5	Cap Tan 10 Mfd 20V 10%	1008-0101
C6	Cap Elect 250UF 6V	1010-0251
C7	Cap Elect 250UF 6V	1010-0251
C8	Cap Tan 10 Mfd 20V 10%	1008-0101
C9	Cap Tan 10 Mfd 20V 10%	1008-0101
C10	Cap Elect 15 Mfd 25V	1010-0150
C11	Cap Tub 2.2 PF	1001-0151
C12	Cap Mica 150 PF	1001-0470
C13	Cap Mica 47 PF	1010-0250
C14	Cap Elect 25 Mfd 6V	1010-0250
C15	Cap Elect 25 Mfd 6V	1010-0250
C16	Cap Elect 1.0 Mfd 25V	1010-0150
C17	Cap Elect 15 Mfd 25V	1010-0150
C18	Cap Elect 15 Mfd 25V	1010-0150
C19	Cap Mica 150 PF	1001-0151
C20	Cap Elect 25 Mfd 6V	1010-0250
C21	Cap Elect 25 Mfd 6V	1010-0250
C22	Cap Elect 25 Mfd 6V	1010-0250
C23	Cap Elect 25 Mfd 6V	1010-0250
C24	Cap Mica 120PF	1001-0151
C25	Cap Mica 120PF	1001-0151
C26	Cap Mica 120PF	1001-0151
C27	Cap Tan 4.7 Mfd 35V 10%	1010-0250
C28	Cap Tan 4.7 Mfd 35V 10%	1010-0250
C29	Cap Mica 2700 PF	1001-0431
C30	Cap Mica 430 PF	1001-0431
C31	Cap Mica 470 PF	1001-0471
C32	Cap Mica Disc .05 Mfd	1005-5039
C33	Cap Mica Disc .05 Mfd	1001-0220
C34	Cap Mica Disc .05 Mfd	1001-0220
C35	Cap Mica Disc .05 Mfd	1001-0220
C36	Cap Mica Disc .05 Mfd	1001-0220
C37	Cap Mica Disc .05 Mfd	1001-0220
C38	Cap Tr Imp 5.5-18 PF	1012-0518
C39	Cap Tr Imp 5.5-18PF	1012-0518
C40	Cap Elect 15 Mfd 25V	1010-0150
C41	Cap Cer Disc .05 Mfd	1005-5039
C42	Cap Cer Disc .05 Mfd	1005-5039
C43	Cap Elect 250 Mfd 6V	1010-0251
C44	Cap Mica 30 PF	1001-0151
C45	Diode ZNR 1M735	1283-4735

Meter Amp Board Model 730A Assembly # 6608-0780

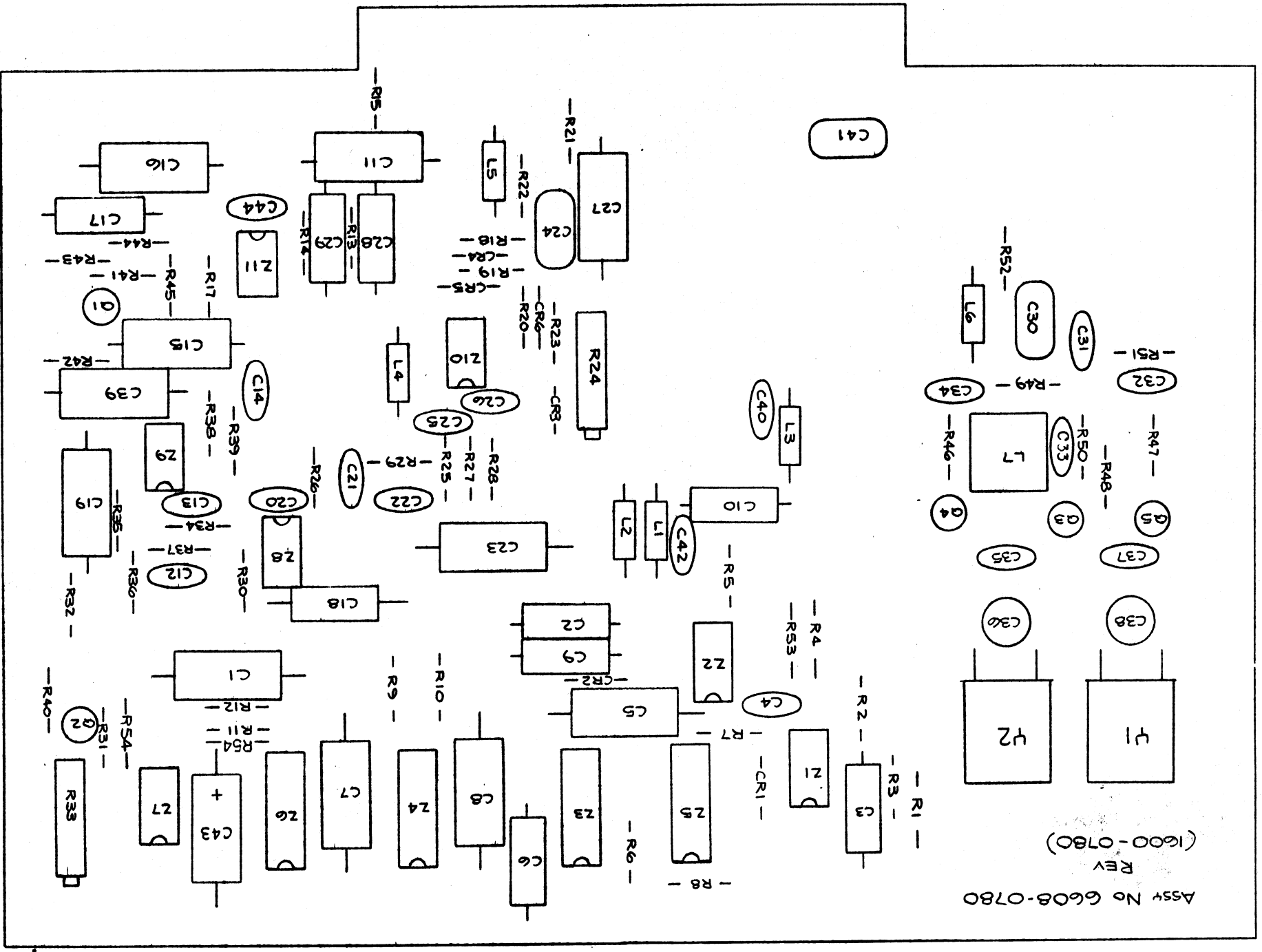
Ckt. Ref.	Description	TFT Stock No.
CR2	Diode ZNR 1M735	1283-4735
CR3	Diode HP 2800	1282-2800
CR4	Diode HP 2800	1282-2800
CR5	Diode HP 2800	1281-3064
CR6	Diode HP 2800	1282-2800
L1	Choke RF 15UH	1530-0150
L2	Choke RF 15UH	1530-0150
L3	Choke RF 15UH	1530-0150
L4	Choke RF 100UH	1530-0101
L5	Choke RF 100UH	1530-0101
L6	Choke RF 82UH	1530-0820
L7	Ind Var 1/H 8T	1550-0011
Q1	Xistor ZM5087	1271-5087
Q2	Xistor ZM3563	1271-3563
Q3	Xistor ZM4275	1271-4275
Q4	Xistor ZM4275	1271-4275
Q5	Xistor ZM4275	1271-4275
R1	Res PC Fin 1/8W 1% 492	1065-1001
R2	Res Car Comp 1/4W 5% 10K	1065-1002
R3	Res Car Comp 1/4W 5% 10K	1065-1002
R4	Res Car Comp 1/4W 5% 10K	1065-1002
R5	Res Car Comp 1/4W 5% 10K	1065-1002
R6	Res Car Comp 1/4W 5% 10K	1065-1002
R7	Res Car Comp 1/4W 5% 10K	1065-1002
R8	Res Car Comp 1/4W 5% 10K	1065-1002
R9	Res Car Comp 1/4W 5% 220	1065-0220
R10	Res Car Comp 1/4W 5% 220	1065-0220
R11	Res Car Comp 1/4W 5% 12K	1065-1202
R12	Res Car Comp 1/4W 5% 12K	1065-1202
R13	Res Car Comp 1/4W 5% 150	1065-0150
R14	Res Car Comp 1/4W 5% 5.6K	1065-5601
R15	Res Car Comp 1/4W 5% 10K	1065-1002
R16	Res Car Comp 1/4W 5% 2.2K	1065-2201
R17	Res Car Comp 1/4W 5% 1K	1065-1001
R18	Res Car Comp 1/4W 5% 5.6K	1065-5601
R19	Res Car Comp 1/4W 5% 2.2K	1065-2201
R20	Res Car Comp 1/4W 5% 12K	1065-1202
R21	Res Car Comp 1/4W 5% 330K	1065-3303
R22	Res Car Comp 1/4W 5% 600K	1065-6003
R23	Res Car Comp 1/4W 5% 10K	1065-1002
R24	Res Car PC Fin 1/8W 1% 3M	1065-3004
R25	Res Car Comp 1/4W 5% 10K	1065-1002
R26	Res Car Comp 1/4W 5% 10K	1065-1002
R27	Res Car Comp 1/4W 5% 10K	1065-1002
R28	Res Car Comp 1/4W 5% 330	1065-0330

Meter Amp Board Model 730A Assembly # 6608-0780

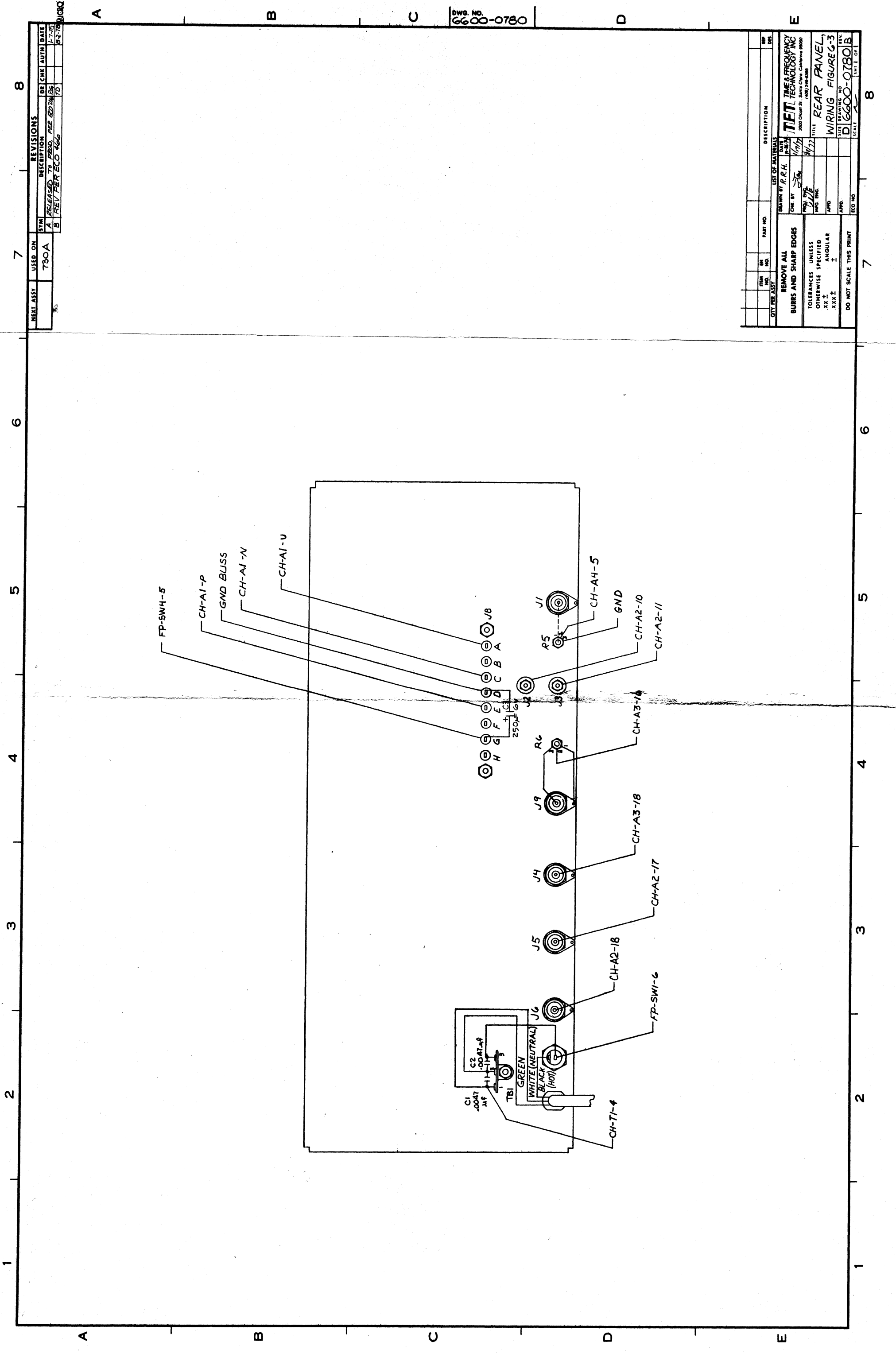
Ckt. Ref.	Description	TFT Stock No.
R29	Res Car Comp 1/4W 5% 10K	1065-1002
R30	Res Car Comp 1/4W 5% 10K	1065-1002
R31	Res Car Comp 1/4W 5% 10K	1065-1002
R32	Res Car Comp 1/4W 5% 10K	1065-1002
R33	Res Car Comp 1/4W 5% 10K	1065-1002
R34	Res Car Comp 1/4W 5% 10K	1065-1002
R35	Res Car Comp 1/4W 5% 10K	1065-1002
R36	Res Car Comp 1/4W 5% 10K	1065-1002
R37	Res Car Comp 1/4W 5% 10K	1065-1002
R38	Res Car Comp 1/4W 5% 10K	1065-1002
R39	Res Car Comp 1/4W 5% 10K	1065-1002
R40	Res Car Comp 1/4W 5% 10K	1065-1002
R41	Res Car Comp 1/4W 5% 10K	1065-1002
R42	Res Car Comp 1/4W 5% 10K	1065-1002
R43	Res Car Comp 1/4W 5% 10K	1065-1002
R44	Res Car Comp 1/4W 5% 10K	1065-1002
R45	Res Car Comp 1/4W 5% 10K	1065-1002
R46	Res Car Comp 1/4W 5% 4.7K	1065-0470
R47	Res Car Comp 1/4W 5% 4.7K	1065-0470
R48	Res Car Comp 1/4W 5% 10K	1065-1000
R49	Res Car Comp 1/4W 5% 10K	1065-1000
R50	Res Car Comp 1/4W 5% 10K	1065-1002
R51	Res Car Comp 1/4W 5% 1K	1065-1001
R52	Res Car Comp 1/4W 5% 1K	1065-1001
R53	Res PC Fin 1/8W 1% 5% 10K	1065-1002
R54	Res Car Comp 1/4W 5% 10K	1065-1002
T1	Crystal 10.7 MHz	2400-1074
T2	Crystal 10.7 MHz	2400-1074
T3	1/2 UR 41CH	1100-0741
T4	1/2 UR 41CH	1100-0741
T5	1/2 UR 41CH	1100-0741
T6	1/2 UR 41CH	1100-0741
T7	1/2 UR 41CH	1100-0741
T8	1/2 UR 41CH	1100-0741
T9	1/2 UR 41CH	1100-0741
Z10	PC Card Extractor Socket, 1/2 8 Pin	1650-6100
Z11	PC Board 730 Mtr Amp	2250-1014
		1600-0780 A1

METER AMP BOARD

A1







SYN	DESCRIPTION	DATE	BY	CHK	AUTH	DATE
A	RELEASED TO PRODUCTION	1/7/75				
B	REV PER ECO #66	1/22/75				

SYN	DESCRIPTION	DATE	BY	CHK	AUTH	DATE
A	RELEASED TO PRODUCTION	1/7/75				
B	REV PER ECO #66	1/22/75				

REV	NO.	DATE	DESCRIPTION

REMOVE ALL  
BURRS AND SHARP EDGES

TOLERANCES UNLESS OTHERWISE SPECIFIED

.XX ±  
.XXX ±

ANGULAR  
I

DO NOT SCALE THIS PRINT

QTY PER ASSY

REF. NO.

PART NO.

DESCRIPTION

DRAWN BY R.R.H.

CHE. BY

APP'D

ECO NO.

DATE

1/17/75

1/22/75

1/22/75

LIST OF MATERIALS

ITEM NO.

DESCRIPTION

NET TIME & FREQUENCY TECHNOLOGY INC.

3000 Decatur St., Santa Clara, California 95050

(408) 246-8866

TITLE

REAR PANEL

WIRING FIGURE G-3

SCALE

D 6600-0780 1B

SIZE

SCALE

1/8"

1/8"

8

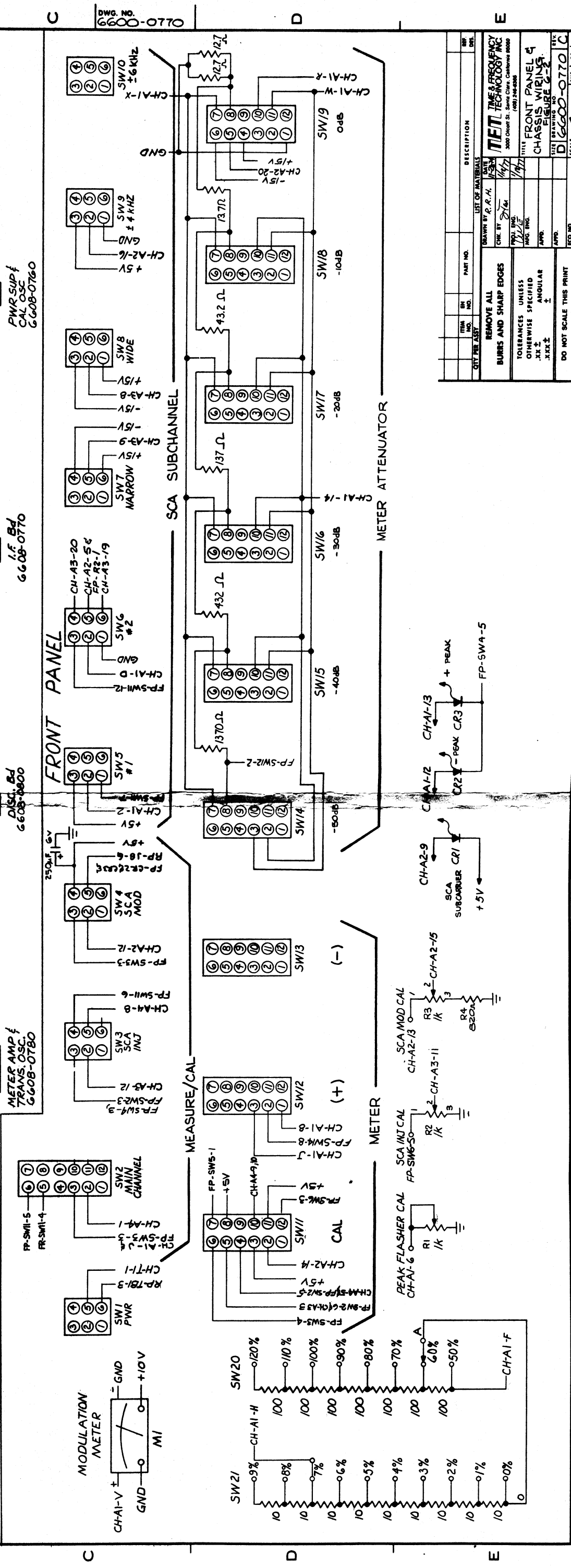
CHASSIS WIRING

REV	DESCRIPTION	DATE
1	RELEASED TO PRODUCTION	7-18-54
2	REV PER ECO 466	8-27-54

REV	DESCRIPTION	DATE
1	RELEASED TO PRODUCTION	7-18-54
2	REV PER ECO 466	8-27-54

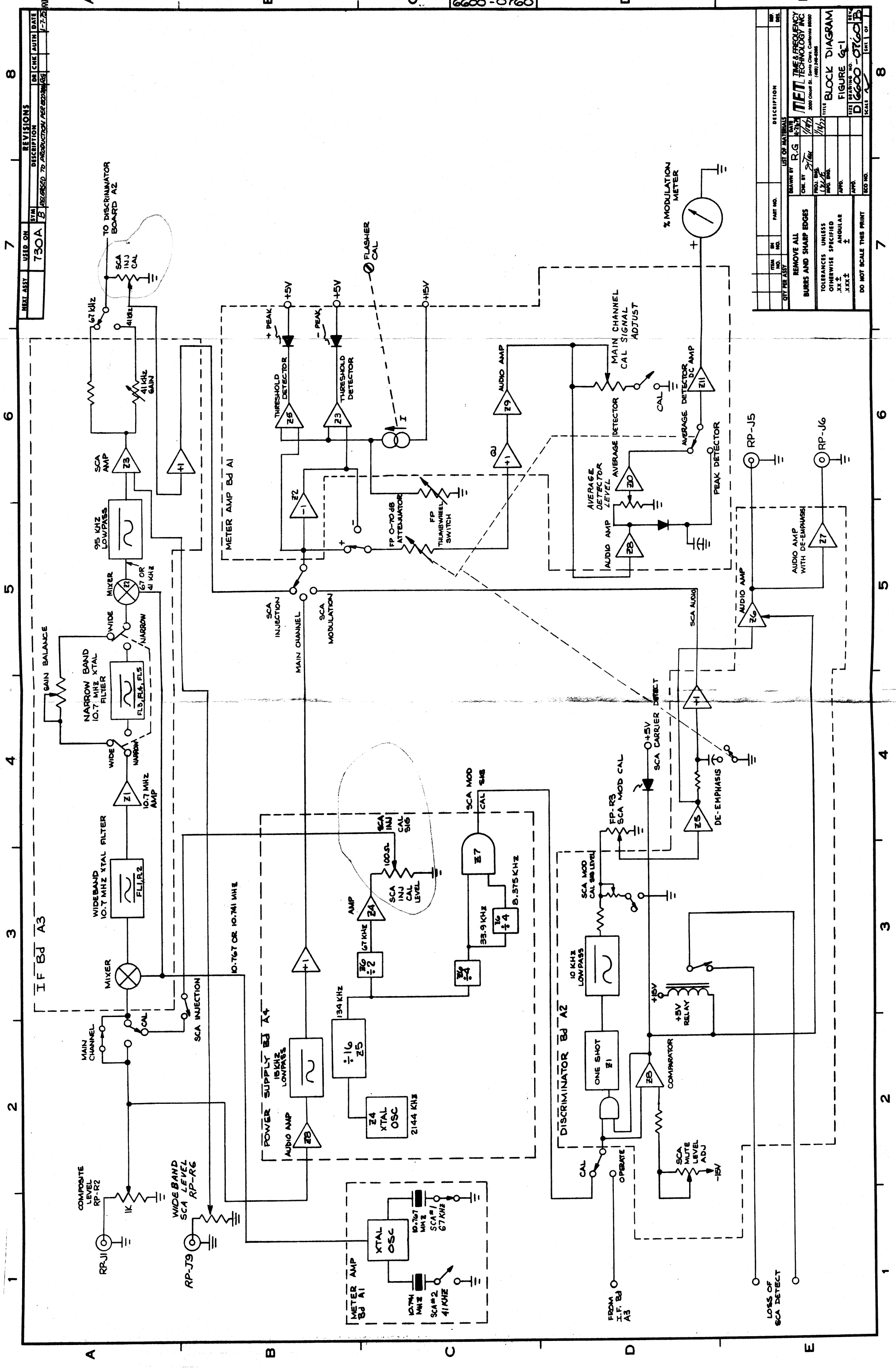
REV	DESCRIPTION	DATE
1	RELEASED TO PRODUCTION	7-18-54
2	REV PER ECO 466	8-27-54



REV	DESCRIPTION	DATE
1	RELEASED TO PRODUCTION	7-18-54
2	REV PER ECO 466	8-27-54

REV	DESCRIPTION	DATE
1	RELEASED TO PRODUCTION	7-18-54
2	REV PER ECO 466	8-27-54

TIME & FREQUENCY TECHNOLOGY INC  
3000 Oxford St. Santa Clara, California 95050  
TEL: 415-353-1111 FAX: 415-353-1112



REV. NO.	DESCRIPTION	DATE	BY	CHKD	APPROV
730A	REDESIGNED TO PRODUCE 75% MODULATION	1-7-72			

QTY	PART NO.	DESCRIPTION	DATE
		REMOVE ALL BURS AND SHARP EDGES	
		TOLERANCES UNLESS OTHERWISE SPECIFIED	
		.XX ±	
		.XXX ±	
		ANGULAR	
		DO NOT SCALE THIS PRINT	

DRAWN BY: R.G.  
 CHK. BY: J.L.  
 DATE: 1/14/72  
 TITLE: BLOCK DIAGRAM  
 FIGURE NO.: 5-1  
 DRAWING NO.: D6600-0760  
 SCALE: 1:1  
 SHEET NO.: 8 OF 8

DWG. NO. 6600-0760