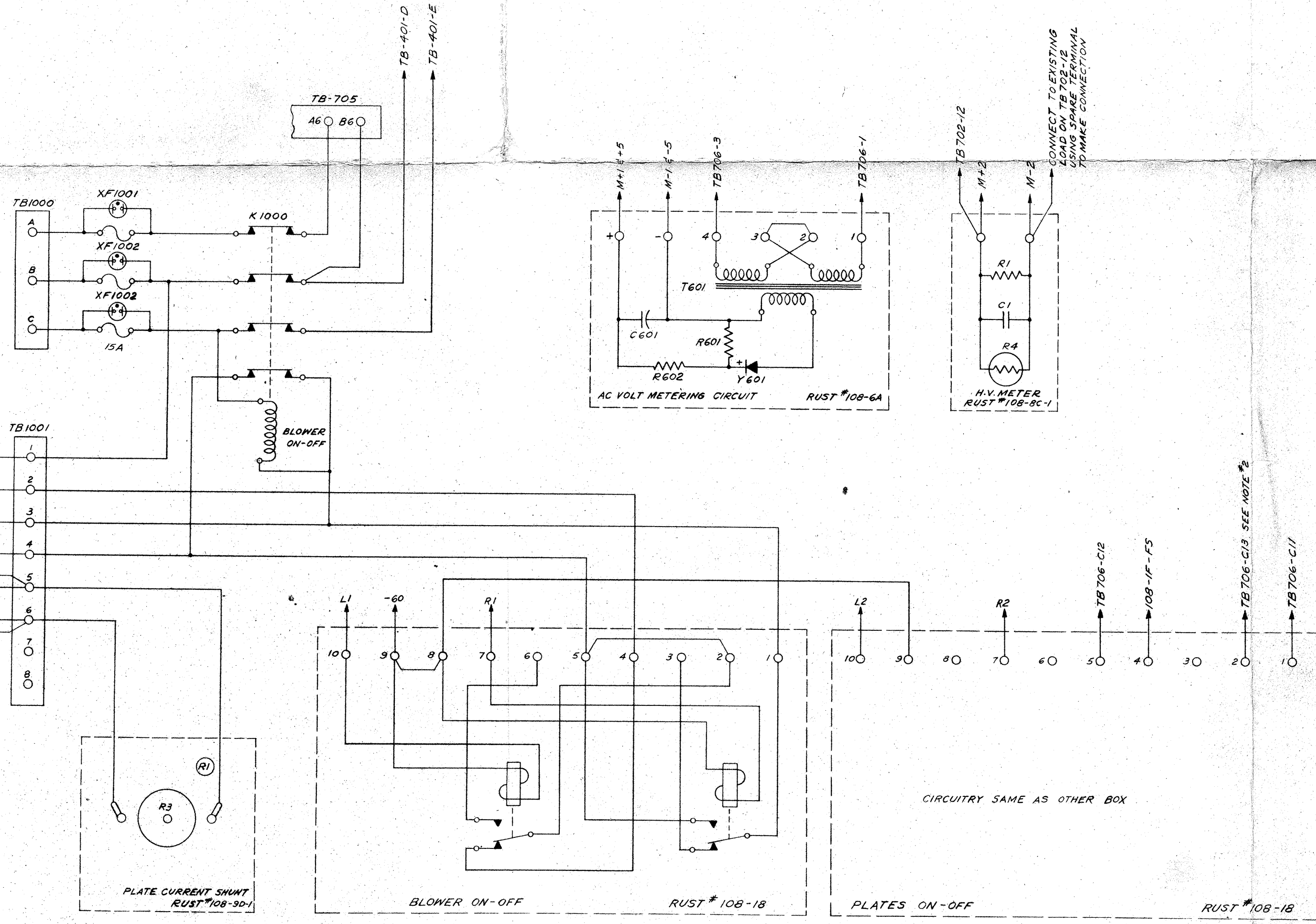


NOTICE: THIS DRAWING AND THE INFORMATION IT CONTAINS IS THE PROPERTY OF RADIO ENGINEERING LABORATORIES, INC. EXCEPT FOR PURPOSES DIRECTLY CONNECTED WITH THE COMPANY'S PERFORMANCE OF A CONTRACT, THIS DRAWING MAY NOT BE USED OR REPRODUCED, NOR ITS CONTENTS DIVULGED WITHOUT OBTAINING THE WRITTEN PERMISSION OF THE COMPANY.

| ZONE | REV. | REVISION DESCRIPTION | DATE | APPROVAL |
|------|------|----------------------|------|----------|
|      |      |                      |      |          |



NOTES:-  
 1. LEADS IDENTIFIED BY LETTER AND NUMBER I.E. L1, R1 OR M+1 ARE CONNECTED TO RUST REMOTE CONTROL PANEL 108-1F IN DRIVER FRAME  
 2. REMOVE EXISTING LEAD WHEN UNIT IS MODIFIED FOR REMOTE CONTROL.

| ISSUE NO. | ISSUE / APPLICATION DESCRIPTION | DATE | APPROVAL | DWG. SIZE |
|-----------|---------------------------------|------|----------|-----------|
|           |                                 |      |          |           |

|                       |                 |   |   |
|-----------------------|-----------------|---|---|
| DRAFTSMAN<br>WC       | DATE<br>6/24/53 | NOMENCLATURE AND DRAWING TITLE<br>S-1907<br>AUX. REMOTE CONTROL PANEL | RADIO ENGINEERING LABORATORIES, INC.<br>ENGINEERING—MANUFACTURING<br>29-01 BORDEN AVE. LONG ISLAND CITY 1, N.Y. |
| CHECKER               |                 |   |   |
| ENGINEER<br>DAM       |                 | DWG. NO.<br>E-1907-0-0D   |   |
| APPROVED<br>S. J. ... |                 | SCALE   | WEIGHT  |
|                       |                 | SHEET / OF SHEETS   |   |