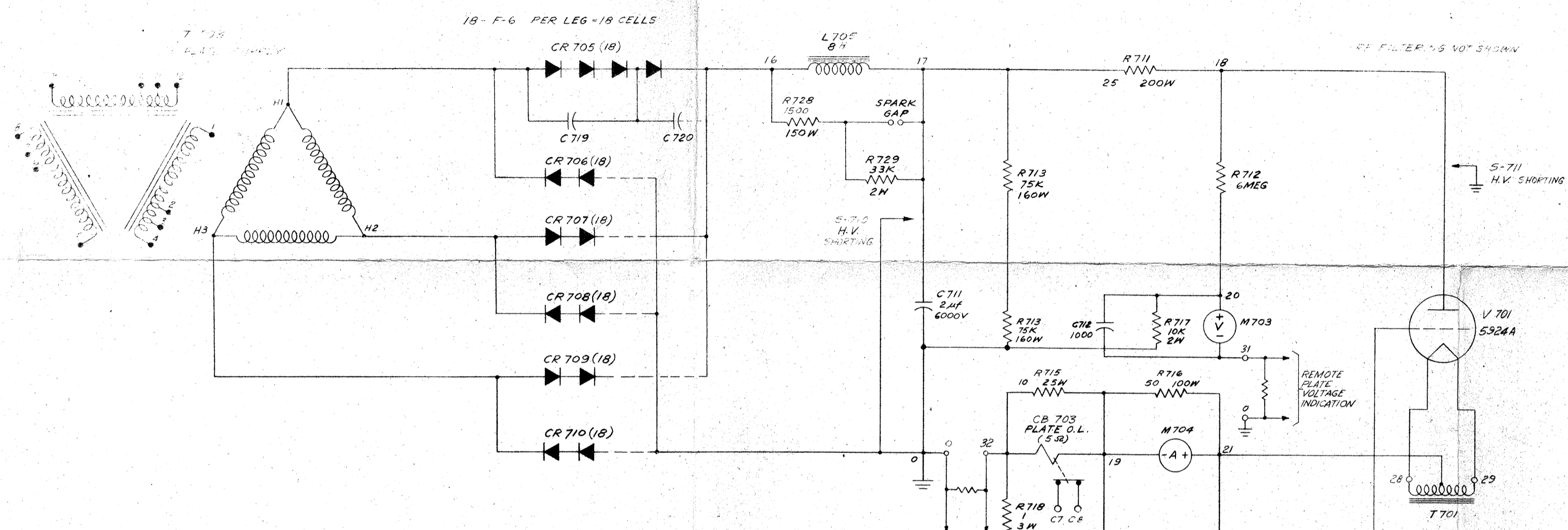
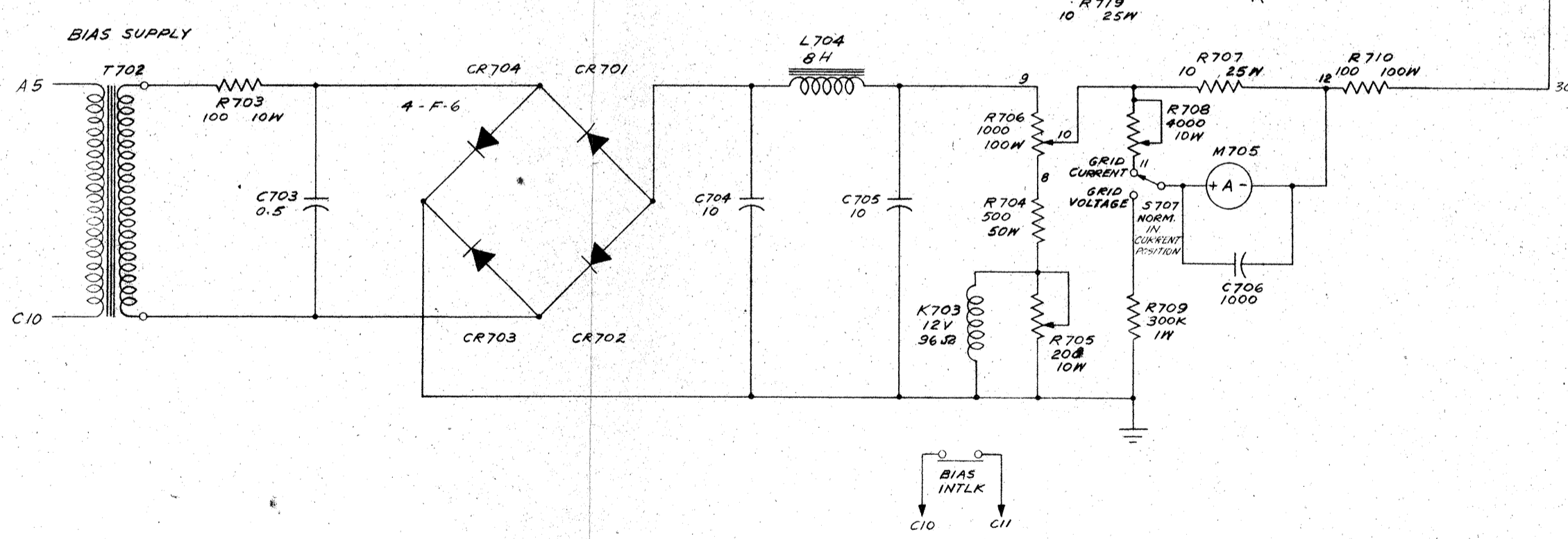


ZONE	REV.	REVISION DESCRIPTION	DATE	APPROVAL



NOTE: CAPACITORS ACROSS EACH GROUP OF THREE CELLS (C719 THRU C754)



- NOTES**
- 1- K=KILO=1,000 MEG=1,000,000 F=FARAD H=HENRY W=WATT
M=MILLI=0.001 S=SECOND U=MICRO=0.000001
 - 2- UNLESS OTHERWISE INDICATED:
a. ALL RESISTANCE VALUES ARE IN OHMS, 1/2 WATT
b. ALL CAPACITANCE VALUES ARE IN UUF
c. ALL INDUCTANCE VALUES ARE IN UH
 - 3- DIRECTIONAL ARROW AT CONTROLS INDICATES CLOCKWISE ROTATION, VIEWED FROM SHAFT (KNOB) END
 - 4- FOR PARTS LIST SEE P.L.

ISSUE NO.	ISSUE / APPLICATION DESCRIPTION	DATE	APPROVAL	DWG. SIZE
				D

DRAFTSMAN MC	DATE 7/8/59	NOMENCLATURE AND DRAWING TITLE DC POWER SUPPLIES SHOWING REMOTE CONTROL CONNECTIONS	STANDARD ELECTRONICS A DIVISION OF RADIO ENGINEERING LABORATORIES, INC. 28-01 BORDEN AVE. LONG ISLAND CITY 1, N.Y.
CHECKER			DWG. NO. EA-936-1-0D
ENGINEER			SHEET 1 OF 2 SHEETS
APPROVED			
	SCALE	WEIGHT	