

AutoLoad 2

Instruction Manual

December 2001
(REV A)



7 Beaver Brook Rd
Littleton, MA 01460
978-486-0086
FAX 978-486-0081

Copyright © 2001 Burk Technology, Inc. All rights reserved.

Table of Contents

Introduction	1
System Requirements.....	1
Installation.....	1
How to Get Help.....	1
Connecting	2
<i>Connection Wizard</i>	2
Welcome.....	3
ARC-16 Settings.....	4
ARC-16 Settings (via parent site).....	5
Connection Settings.....	6
Finish.....	7
<i>Connect using Saved Settings</i>	8
<i>Connect using Recent Settings</i>	9
<i>Downloading</i>	10
<i>Uploading</i>	10
Configuration	11
<i>Local Options</i>	11
<i>Communication Settings</i>	13
<i>Channel Settings</i>	14
<i>ESI Settings</i>	16
<i>ESI Labels</i>	17
<i>Saving and Opening Files</i>	18
Opening.....	18
Saving.....	18

Introduction

AutoLoad 2.0 gives you access to your ARC-16 configuration settings from the comfort of your computer. Use AutoLoad to backup your configuration to disk, so that you can easily restore your settings in the future. AutoLoad also makes it easy to enter channel labels and ESI vocabulary, making ARC-16 setup a breeze. And if you ever need to replace your ARC-16 with a backup unit, you can use AutoLoad to restore your old settings to the new unit.

System Requirements

- ARC-16 firmware version 5.4
- Pentium 133MHz or better
- 32 MB RAM
- Windows 98, ME, NT 4.0 SP5, 2000 SP1, XP
- Bell 212A compatible modem (if using a modem connection)

Installation

To install AutoLoad, insert the CD-ROM into your CD drive. If the CD does not start automatically, click Start, then select Run. Enter d:\launch.exe (where "d" is the letter of your CD-ROM drive). Click "Install AutoLoad" to begin the installation.

To launch AutoLoad, click on the AutoLoad icon in the start menu, under Burk Technology\AutoLoad.

How to Get Help

The help file can be accessed from AutoLoad by clicking on the help menu.

?"What's This" help is also available to provide quick descriptions of AutoLoad's features.

Connecting

Before you can download from or upload to your ARC-16, you need to define a connection. The first time you do this, you will use the Connection Wizard. Once you have at least one connection, you can connect using a saved connection, or just use the most recently used settings.

Connection Wizard

When you download or upload, if you have not previously established a connection, the Connection Wizard will load automatically. Otherwise, the Connection Settings dialog will be shown (below). To launch the Connection Wizard from the dialog, select "Create a new connection" and click OK.

Select AutoLoad Connection ? | X

How do you want to connect to the ARC-16?

Use the most recent settings.

Load a saved connection.

Create a new connection.

OK

Cancel

Help

Connection Settings

Serial Number: 983609 Site Letter: D

Password: ****

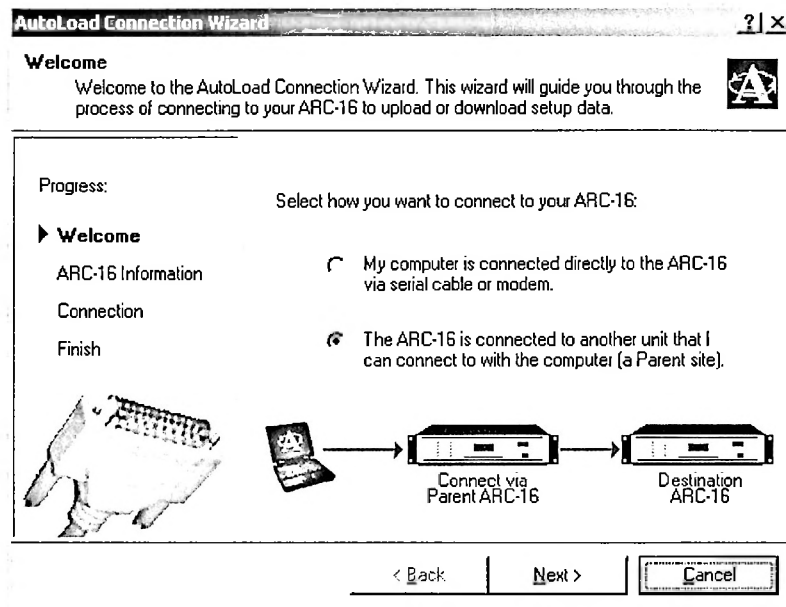
COM Port: COM1

Phone Number:

Download from site: D

Restore calibration settings

Welcome



The first page of the Connection Wizard asks you to determine if your ARC-16 is connected directly to the computer, or via another unit. Here are some examples:

If you want to download settings from Site A. Select the first option if:

- Your computer is physically connected to Site A with a serial cable.
- Site A has an ESI that you can call using your computer's modem.



Select the second option if:

- Your computer is physically connected to Site B, C, or D. This "parent" site is connected to Site A.
- Site B, C, or D has an ESI that you can call using your computer's modem. This "parent" site is connected to Site A.

**ARC-16 Settings**

AutoLoad Connection Wizard [?] [X]

ARC-16 Information
Enter the serial number, site letter, and password for the ARC-16.

Progress:

Welcome

► **ARC-16 Information**

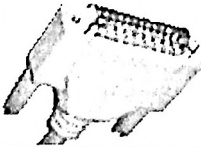
Connection

Finish

Serial Number: A

Site Letter:

Password:



< Back Next > Cancel

Serial Number

Enter the serial number of your ARC-16. The serial number is a 6-digit number, and can be found on the back of the unit.

Site Letter

Enter the site letter (A, B, C, or D) of your ARC-16.

Password

Enter the USER password for the ARC-16.

ARC-16 Settings (via parent site)

AutoLoad Connection Wizard ? | X

ARC-16 Information
Enter the serial number, site letter, and password for the ARC-16 that you are connecting to. Enter the site letter of the ARC-16 that you want to download from.

Progress:

- Welcome
- **ARC-16 Information**
- Connection
- Finish

Parent ARC-16 Settings

Serial Number: A

Site Letter:

Password:

Destination Site Letter:

Connect via Parent ARC-16

Destination ARC-16

< Back Next > Cancel

Serial Number

Enter the serial number of the ARC-16 that your computer is directly connected to. The serial number is a 6-digit number, and can be found on the back of the unit.

Site Letter

Enter the site letter of the ARC-16 that your computer is directly connected to (A, B, C, or D).

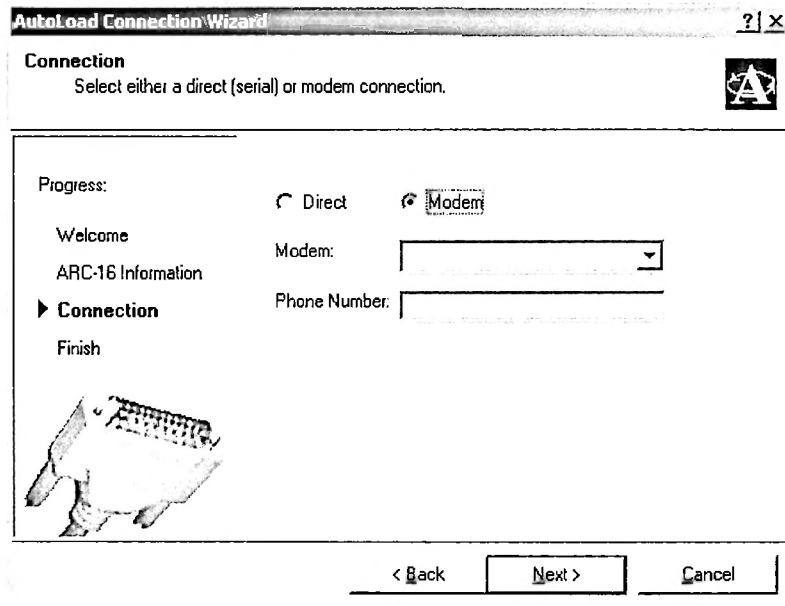
Password

Enter the USER password for the ARC-16 that your computer is directly connected to.

Destination Site Letter

Enter the site letter (A, B, C, or D) of the ARC-16 that you are downloading from or uploading to. This should be different from the "parent" site letter.

Connection Settings



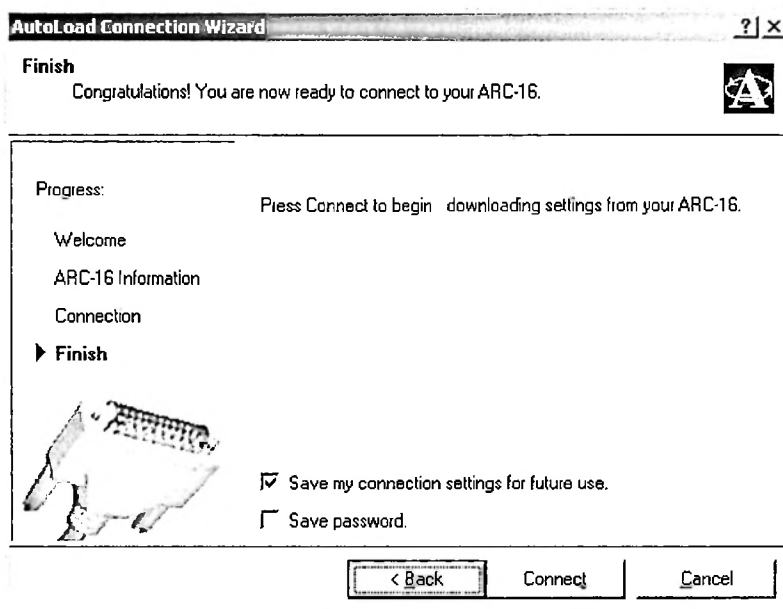
Direct Connection (not shown)

Select the COM Port from the drop down list.

Modem Connection

Select the modem from the drop down list, and enter the phone number.

Finish



Check "Save my connection settings for future use" to save these settings to a file.

Check "Save password" if you want your password saved along with the other settings. If you are not the only user of your computer, you may not want to do this for security purposes.

Click Connect to start downloading/uploading. When the download is complete, your ARC-16 display settings will be displayed in the configuration window.

Connect using Saved Settings

Select AutoLoad Connection ? | X

How do you want to connect to the ARC-16?

Use the most recent settings.

Load a saved connection.

Create a new connection.

OK

Cancel

Help

Connection Settings

Serial Number: 983609 Site Letter: D

Password: ****

COM Port: COM1

Phone Number:

Download from site: D

Restore calibration settings

To load saved settings, select the option: "Load a saved connection". The drop down list will contain all the saved connections found in AutoLoad's default connection folder. If you saved your settings in a different folder, click the "browse" button (...) to find the connection file. The serial number, site letter, COM port/modem, phone number, and password will be loaded.

Note: the password is only loaded if you chose to save it from the Connection Wizard. If you did not, then you will have to enter the USER password before connecting.

You will need to select the site letter of the ARC-16 that you want to download from.

Note: when uploading, you can *not* select the destination site letter. You can *only* upload to the site letter from which you downloaded your settings. This is to prevent misconfiguration of the ARC-16.

Note: if you are connecting directly to the ARC-16, the "download from site" letter will be the same as the site letter above. However, if your ARC-16 is connected via another unit, these site letters will differ.

Connect using Recent Settings

Select AutoLoad Connection ? | X |

How do you want to connect to the ARC-16?

Use the most recent settings.

Load a saved connection.

Create a new connection.

OK

Cancel

Help

- Connection Settings

Serial Number: 983609 Site Letter: D

Password: xxxx

COM Port: COM1

Phone Number:

Download from site: D

Restore calibration settings

Select the option: "Use the most recent settings". The serial number, site letter, COM port/modem, and phone number that you last used to connect will be loaded. You will need to enter the USER password, and select the site letter of the ARC-16 that you want to download from.

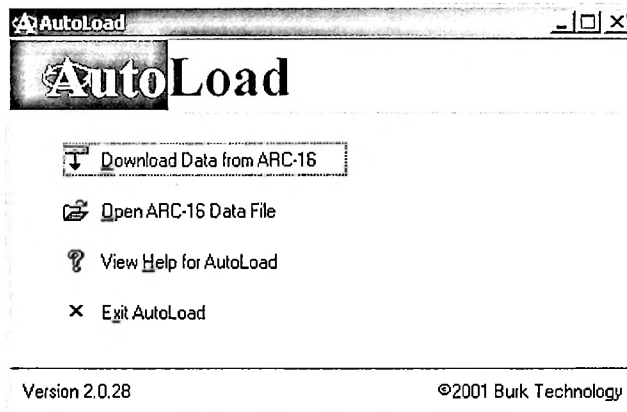
Note: when uploading, you can *not* select the destination site letter. You can *only* upload to the site letter from which you downloaded your settings. This is to prevent misconfiguration of the ARC-16.

Note: if you are connecting directly to the ARC-16, the "download from site" letter will be the same as the site letter above. However, if your ARC-16 is connected via another unit, these site letters will differ.

Downloading

To download settings from your ARC-16, click "Download..." from the ARC-16 menu, or click the Download button from the AutoLoad startup screen (below).

You will be prompted for connection settings. When the download is complete, your settings will be displayed in the configuration window.



Uploading

To upload settings to your ARC-16, you must first load configuration settings either by downloading or by opening a saved file. To start the upload, click "Upload..." from the ARC-16 menu. You will be prompted for connection settings.

Note: the upload process may take several minutes.

Calibration Settings

If you want to restore your ARC-16 calibration settings, check the box labeled "Restore calibration settings" from the Select AutoLoad Connection dialog.

Configuration

To edit your ARC-16 configuration, open a saved file or download settings from your ARC. Your settings will be displayed in the configuration window (seen below). The settings are divided into five categories:

- Local Options
- Communication
- Channel Settings
- ESI Settings
- ESI Labels

Local Options

The screenshot shows the AutoLoad configuration window with the 'Local Options' tab selected. The window title is 'AutoLoad' and the menu bar includes 'File', 'ARC-16', and 'Help'. The toolbar contains icons for file operations and help. The 'Local Options' tab is active, showing a 'Site Label' field with 'WXYZ' entered. Below this are two main sections: 'Local Options' and 'Change Passwords'. The 'Local Options' section has a grid of checkboxes: Channels 1-8 (checked), Channels 9-16 (checked), Local ESI (checked), Use DTMF (checked), Two Ports (unchecked), Site A ESI (unchecked), Site B ESI (checked), Site C ESI (unchecked), Site A SSI (unchecked), and Site B SSI (checked). The 'Change Passwords' section has a 'Change Passwords' checkbox (unchecked) and fields for 'Old Master', 'New Master', 'New User', and their respective 'Confirm' fields. At the bottom, there is a status bar with 'Site D', 'Last Modified: 11/9/2001 1:25:21 PM', and 'Last Synchronized: 11/9/2001 1:25:16 PM'.

Setting	Description
Site Label	The site label for the local unit, up to 8 characters.
Channels 1-8	Check this box if the local unit has an I/O card for channels 1-8.
Channels 9-16	Check this box if the local unit has an I/O card for channels 9-16.

Setting	Description
Local ESI	Check this box if the local unit has an ESI (Enhanced Speech Interface).
Use DTMF	Check this box to enable DTMF (only applicable if the unit has an ESI).
Two Ports	Check this box if the local unit has a TPA (Two Port Adapter).
Site (X) ESI	Check this box if the site listed (X) has an ESI.
Site (X) SSI	Check this box if the site listed (X) has an SSI.
Enable Limits Monitoring	Check this box to enable limits monitoring on the local unit.

Change Passwords

If you want to change the password(s), check the "Change Password" box. Enter the existing MASTER password. Enter and confirm passwords for MASTER and USER.

Note: if you do not want to change one of these passwords, you can enter the old existing password instead of a new one.

To make the change, you need to upload your settings.

Communication Settings

AutoLoad 2

File ARC-16 Help

Local Options **Communication** Channel Settings ESI Settings ESI Labels

Remote Site Communication

	Site D	Site A	Site B	Site C
Data Received From:	No Port	Port 1	No Port	No Port
Data Sent Out:	Port 1 + 2	Port 2	Port 2	Port 2
Highest Channel:	16	0	16	0

Baud Rates

This ARC-16 has been modified to operate at 1200 baud

Port 1: 300 baud Port 2: 300 baud

Site D | Last Modified: 11/9/2001 1:25:21 PM | Last Synchronized: 11/9/2001 1:25:16 PM

Setting	Description
Data Received From	The port that the local unit uses to receive data from Site (X).
Data Sent Out	The port that the local unit uses to send data from Site (X) to other sites.
Highest Channel	The highest channel on Site (X).

Note: The Data Received/Sent settings are disabled for the local site to prevent a configuration error.

Baud Rates

If your ARC-16 has been modified to operate at 1200 baud, check the box under Baud Rates. You can set the baud rate for Ports 1 and 2 to either 300 or 1200.

Note: This modification is *not* made to most ARC-16s. If you are unsure if your ARC-16 has been modified, then it probably has not. An unmodified ARC-16 operates at 300 baud.

Channel Settings

AutoLoad											
File ARC-16 Help											
Local Options Communication Channel Settings ESI Settings ESI Labels											
	Label	Status Alarm	Invert Status	Decimal Point	Low Limit	High Limit	Raise Duration	Lower Duration	High/Low Alarm Delay	Status Alarm Delay	Convert Type
1	CHAN 1	<input type="checkbox"/>	<input type="checkbox"/>	None	0	0	Default	Default	Off	Off	Degree
2	CHAN 2	<input type="checkbox"/>	<input type="checkbox"/>	0.000	0	0	Default	Default	Off	Off	Degree
3	CHAN 3	<input type="checkbox"/>	<input type="checkbox"/>	None	0	0	Default	Default	Off	Off	Degree
4	CHAN 4	<input type="checkbox"/>	<input type="checkbox"/>	None	0	0	Default	Default	Off	Off	Degree
5	CHAN 5	<input type="checkbox"/>	<input type="checkbox"/>	000.0	0	0	Default	Default	Off	Off	Degree
6	CHAN 6	<input type="checkbox"/>	<input type="checkbox"/>	000.0	0	0	Default	Default	Off	Off	Degree
7	CHAN 7	<input type="checkbox"/>	<input type="checkbox"/>	00.00	0	0	Default	Default	Off	Off	Degree
8	CHAN 8	<input type="checkbox"/>	<input type="checkbox"/>	0.000	0	0	Default	Default	Off	Off	Degree
9	CHAN 9	<input type="checkbox"/>	<input type="checkbox"/>	None	0	0	Default	Default	Off	Off	Degree
10	CHAN 10	<input type="checkbox"/>	<input type="checkbox"/>	000.0	0	0	Default	Default	Off	Off	Degree
11	CHAN 11	<input type="checkbox"/>	<input type="checkbox"/>	00.00	0	0	Default	Default	Off	Off	Degree
12	CHAN 12	<input type="checkbox"/>	<input type="checkbox"/>	None	0	0	Default	Default	Off	Off	Degree
13	CHAN 13	<input type="checkbox"/>	<input type="checkbox"/>	None	0	0	Default	Default	Off	Off	Degree
14	CHAN 14	<input type="checkbox"/>	<input type="checkbox"/>	000.0	0	0	Default	Default	Off	Off	Degree
15	CHAN 15	<input type="checkbox"/>	<input type="checkbox"/>	None	0	0	Default	Default	Off	Off	Degree
16	CHAN 15	<input type="checkbox"/>	<input type="checkbox"/>	0.000	0	0	Default	Default	Off	Off	Degree

Site D | Last Modified: 11/9/2001 1:25:21 PM | Last Synchronized: 11/9/2001 1:25:16 PM

Setting	Description
Label	The channel label can be up to 7 characters.
Status Alarm	Check this box if you want status alarms reported on this channel.
Invert Status	Check this box to invert the polarity of the status.
Decimal Point	Select the location of the decimal point.
Low Limit	Enter the low limit for this channel. The limit will use the decimal point setting for the channel.
High Limit	Enter the high limit for this channel. The limit will use the decimal point setting for the channel.
Raise Duration	Enter the duration of the Raise command. The duration can range from .2 to 28 seconds, and can be entered using 1/10 second. A value of 0 can be used for the default duration or .7 second. Note: the command duration is not fully accurate to 1/10 second; some rounding may occur.

Setting	Description
Lower Duration	Enter the duration of the Lower command. The duration can range from .2 to 28 seconds, and can be entered using 1/10 second. A value of 0 can be used for the default duration or .7 second. Note: the command duration is not fully accurate to 1/10 second; some rounding may occur.
High/Low Alarm Delay	Enter an alarm delay for high/low (limit) alarms. The delay can be between 1 and 126 seconds. Enter 0 for no delay.
Status Alarm Delay	Enter an alarm delay for status alarms. The delay can be between 1 and 126 seconds. Enter 0 for no delay.
Convert Type	Choose the conversion type (for calibration). The options are Degree, Linear, Power, and Indirect. See the ARC-16 manual for more information.

ESI Settings

Sign-On Message			
A	B	C	D

Site D | Last Modified: 11/9/2001 1:25:21 PM | Last Synchronized: 11/9/2001 1:25:16 PM

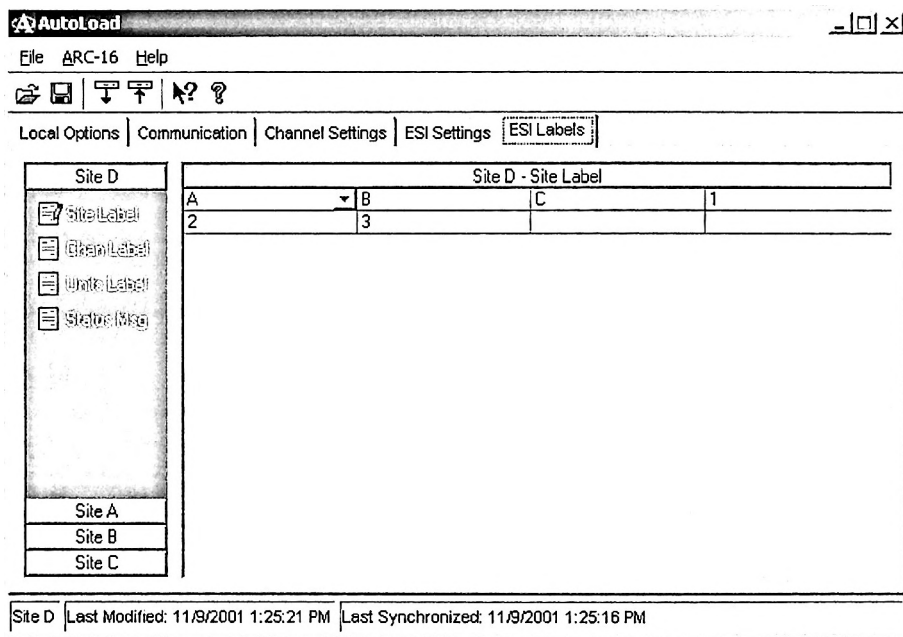
Setting	Description
Dial out on alarm	Check this box if you want the ESI to dial out (using the phone number list) when an alarm occurs.
Answer incoming calls	Check this box if you want the ESI to answer incoming calls (calls can be voice or data).
Answer after X rings	Enter the number of rings that the ESI should wait for before answering a call (only applies if the "answer" option is enabled).
Phone numbers	Enter up to 9 phone numbers that the ESI should try to dial in the event of an alarm. The numbers will be dialed in order. See the ARC-16 manual for more information.

Sign-On Message

The sign-on message is played when the ESI answers an incoming call. To enter the message, select up to 16 words using the drop down lists in the table (the order is left to right, then top to bottom). **Note:** the word "hello" is automatically spoken before the sign-on message.

Tip: to enter words quickly, start typing the word you want. The drop down list will fill in the rest of the word once it finds a match. To remove a word, choose the blank entry from the bottom of the list.

ESI Labels



ESI labels fall into four categories: Site, Channel, Units, and Status. See the ARC-16 manual for more information.

To enter labels, first select the site letter from the navigation bar on the left. Then select the icon for the type of label you want to edit. The icon will change to the "edit" icon (as seen above), and the grid caption will show the site and label type.

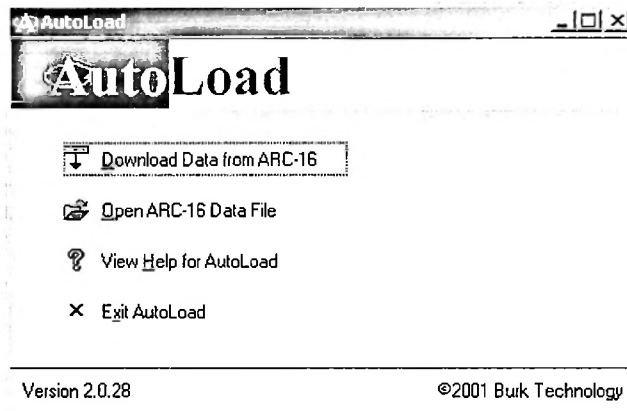
Use the drop down list to enter each word of the label.

Tip: to enter words quickly, start typing the word you want. The drop down list will fill in the rest of the word once it finds a match. To remove a word, choose the blank entry from the bottom of the list.

Saving and Opening Files

Opening

To open a file, click "Open" from the File menu in the configuration window, or click the Open button from the AutoLoad startup dialog (seen below). Select the file that you want to open. The ARC-16 settings will be displayed in the configuration window.



Saving

To save changes to your configuration, click "Save" from the File menu.

Note: the configuration file is specific to the site letter from which it was downloaded. However, it is not serial number specific. This means if you downloaded these settings from Site A, you can *only* upload back to a Site A. If you need to replace an ARC-16 with a backup unit, configure the backup to be the same site letter as the old unit, then use AutoLoad to restore your original settings.