

INSTRUCTION MANUAL

RACK ADAPTERS

**LRA-3, LRA-4, LRA-5,
LRA-6 AND LRA-7**



LAMBDA ELECTRONICS CORP.-MELVILLE, L. I., N. Y.

GENERAL DESCRIPTION

Rack adapters LRA-4, LRA-6 and LRA-7 are designed for use in equipment racks where ruggedized mounting of Lambda modular power supplies is required. The adapters can be used with or without chassis slides. A wire channel located on the right side of each adapter permits routing of connection wires to each unit input-output terminal block.

Rack adapters LRA-3 and LRA-5 are designed for simple applications of rack installation where chassis slides and ruggedized mounting of equipment are not required.

Each rack adapter can be used to mount various combinations of modular power supplies.

Refer to the following list which indicates possible combinations of modular units that can be mounted in individual rack adapters.

ADAPTER MODEL

COMBINATIONS OF MODULAR UNITS

LRA-3	+*4A, B, or C	#2D or 2E	+2A, 2B or 2C + #1D or 1E or 1CC	#3CC
LRA-6	*4A, B, or C	2D or 2E	2A, 2B or 2C + 1D or 1E or 1CC	3CC
LRA-7	° 8A, B or 4A + 4C 1CC, D, E or EE+ 4A or 4B or 2C	2D, E or EE	1EE + 1E or 1D, or 2C or 4A or 4B	3CC

* A total of four assorted A,B, or C units in any combination can be installed.

° A total of eight assorted A or B units, or four C and four A or B units can be installed in any combination.

+ LCS-A, LCD-A, and LXD-A models require the use of spacer kit KT-1.

except LXD-CC, LXS-D, LXD-D, LXT-D, LXS-E, LCS-D, LCS-E, and LWD.

LRA-4	4A	**3B or 3C	2A + 1B or 1C 1A + 2B or 2C
LRA-5	++4A	**3B or 3C	++2A + 1B or 1C ++1A + 2B or 2C

** A total of three assorted B or C units, in any combination can be installed.

++ LCS-A, LCD-A, and LXD-A models require the use of spacer kit KT-1.

INSTALLATION OF UNITS INTO LRA-6, LRA-4 AND LRA-7, RACK ADAPTERS, FIGURES 1, 2 AND 5

Install modular power supply units into the rack adapter as follows:

1. Position mounting rails on modular unit so that the front of the rails, stamped FRONT on LRA-6 and LRA-4, are at the terminal block end of the unit.

Front portion of the rail used on LRA-7 rack adapter may be identified by a larger joggled end as compared to a smaller one at the rear of the rail. Place rails on the proper mounting side of the modular unit as listed below:

A. For rack adapter LRA-6 and LRA-7:

<u>UNIT</u>	<u>MOUNTING SIDE</u>
A	3-3/16 x 6-1/2 inches
B	3-3/16 x 6-1/2 inches
C	3-3/16 x 9-3/8 inches
D	7-1/2 x 9-3/8 inches
CC	4-15/16 x 9-3/8 inches
E	7-1/2 x 11-7/8 inches
**EE	7-1/2 x 16-1/2 inches

B. For rack adapter LRA-4:

<u>UNIT</u>	<u>MOUNTING SIDE</u>
A	3-3/4 x 6-1/2 inches
B	4-15/16 x 6-1/2 inches
C	4-15/16 x 9-3/8 inches

** Only used with rack adapter LRA-7

2. Secure each unit with four 8-32 x 7/16 truss-head screws supplied with the rack adapter.

3. Position unit with attached mounting rails in the rack adapter so that terminal block faces front of adapter.++ Secure rails to rack adapter using captive screws assembled on each rail.

++ Rack adapter LRA-7 may house more than one LM unit on a pair of rails. If such is the case, front-mounted units would still have their terminal blocks facing the front of the rack adapter; only rear-mounted unit terminal blocks would face the rear of the rack adapter.

4. To protect wiring from abrasion and heat damage, route all terminal block connecting wires in the wire channel located on the *right side of the rack adapter.

* If desired, the wire channel can be re-located to the left side of the unit and secured in position using the same attaching hardware.

INSTALLATION OF UNITS INTO LRA-3 AND LRA-5,
RACK ADAPTERS, FIGURES 3 AND 4.

Install modular power supply units into the rack adapter as follows:

1. When using rack adapter LRA-3, Figure 3, position all modular units at rear of rack adapter so that the terminal block

is on the left half of cutout when viewed from front of adapter. Secure each A, B, C, CC, D and E unit with four 8-32 x 1/4 truss-head screws supplied with the rack adapter.

2. When using rack adapter LRA-5, Figure 4, position all modular units at rear of the rack adapter so that the terminal block is in the lower half of cutout, when viewed from front of adapter. Secure each A, B and C unit with four 8-32 x 1/4 truss-head screws.

3. A connector mounting cutout, located on the right side of adapter, is provided for wiring to the power supply terminal blocks. Remove blank connector plate* so that connecting wires can be routed into the rack adapter.

*If desired, the blank connector plate can be used to mount a connector to provide means for connection to the wiring routed in the rack adapter.

4. Place all terminal block wiring connections in front of the unit on the rack adapter chassis so that wires can be easily routed to the connector mounting cutout.

MOUNTING CHASSIS SLIDES ON RACK ADAPTERS LRA-6, LRA-4 AND LRA-7

Mount chassis slides using the following hardware. To assure unrestricted mounting of units into the adapter, designated screw lengths must not be exceeded. Insert screws into designated holes and secure slide in position, using the appropriate hex-nuts and lockwashers.

CHASSIS TRAK NOS. 114, 116, 118: 10-32 x 5/8 fl-hd; use A holes.

*CHASSIS TRAK NO. CTS-122: 10-32 x 5/8 fl-hd.

JONATHAN NO. 130 Series: 6-32 x 5/8 fl-hd; use B holes.

*JONATHAN NO. 110QD-20-2: 10-32 x 5/8 fl-hd.

GRANT PULLEY NO. 4435 Slides: 6-32 x 3/8 fl-hd; use B holes.

LAMBDA SLIDE NO. KHT-34-003: 6-32 x 3/8 pan hd; use B holes.

*LAMBDA SLIDE NO. KHT-44-008: 10-32 x 5/8 pan-hd.

* Only used on rack adapter LRA-7

USING BLANK PANELS

Full-rack, half-rack and quarter-rack panels can be used with the Lambda rack adapters. The following chart lists the panels and rack adapters that can be utilized together. Secure each panel in position using eight 6-32 x 3/8 pan-head screws supplied with each rack adapter.

Rack Adapter	BLANK PANELS		
	1/2 Rack	1/4 Rack	Full Rack
LRA 3, 6, 7	LBP-20	LBP-10	LBP-40
LRA 4, 5	LBP-50	LBP-60	LBP-30

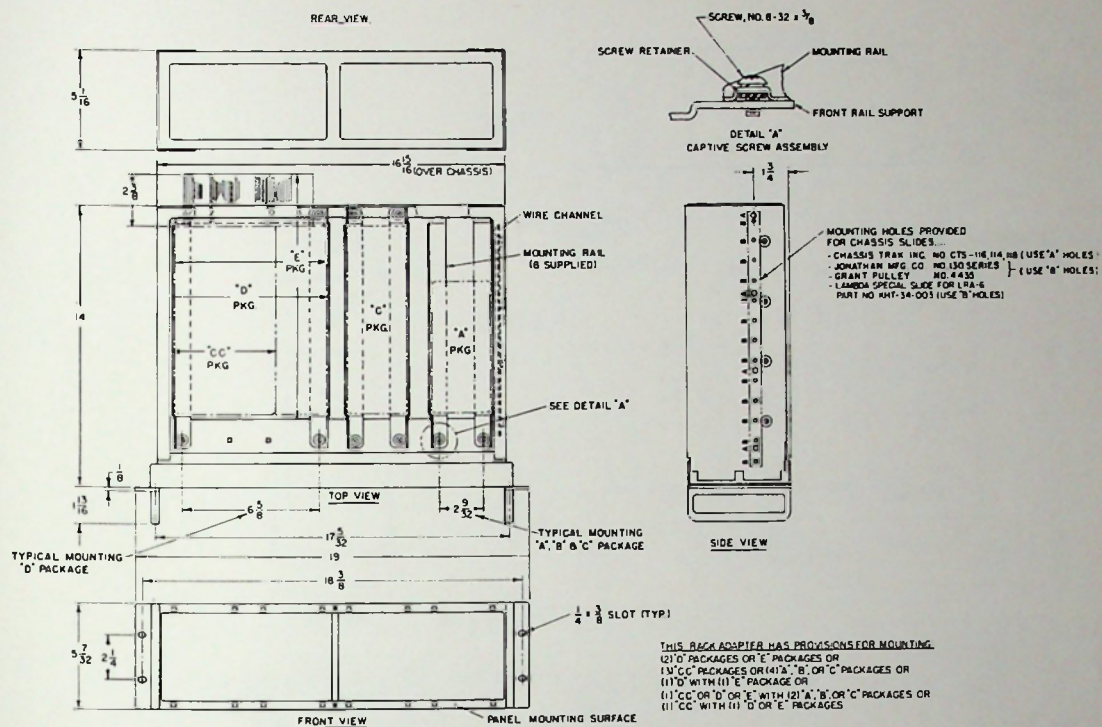


FIGURE 1. RACK ADAPTER LRA-6

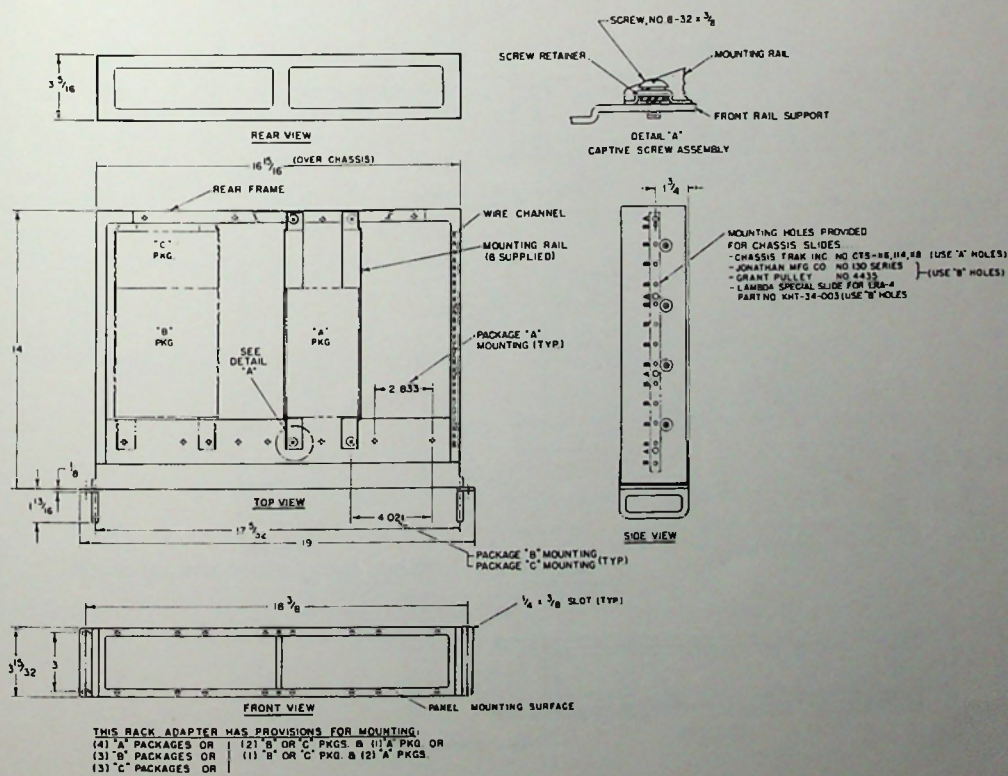


FIGURE 2. RACK ADAPTER LRA-4

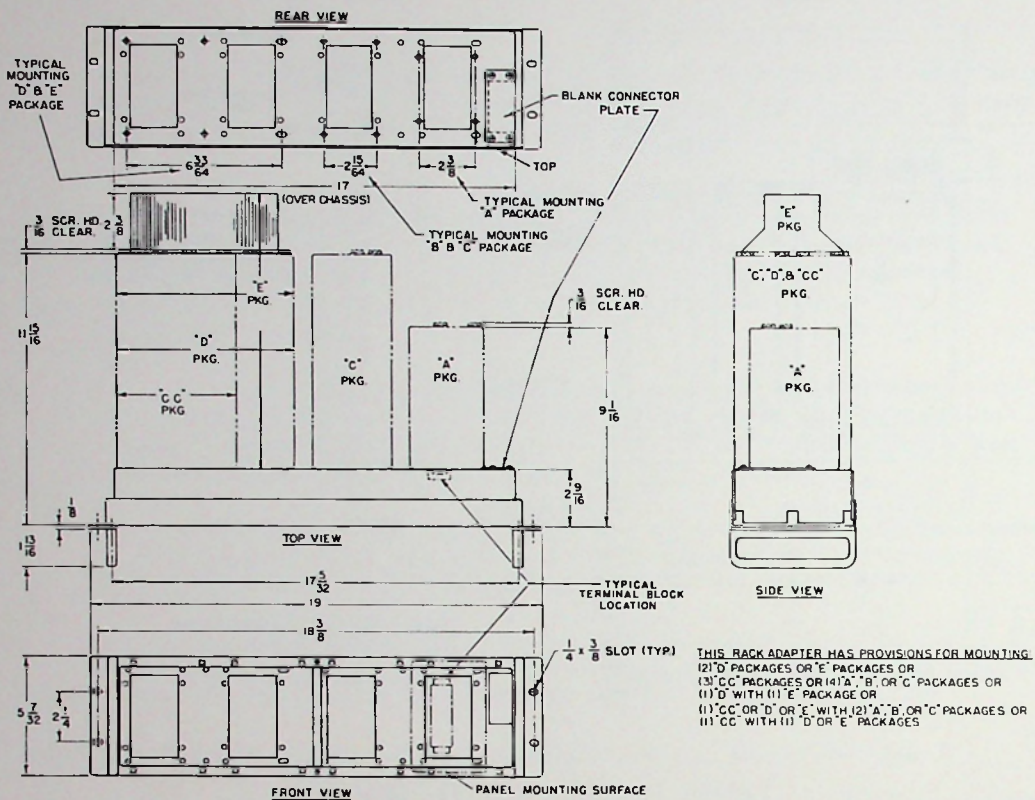


FIGURE 3. RACK ADAPTER LRA-3

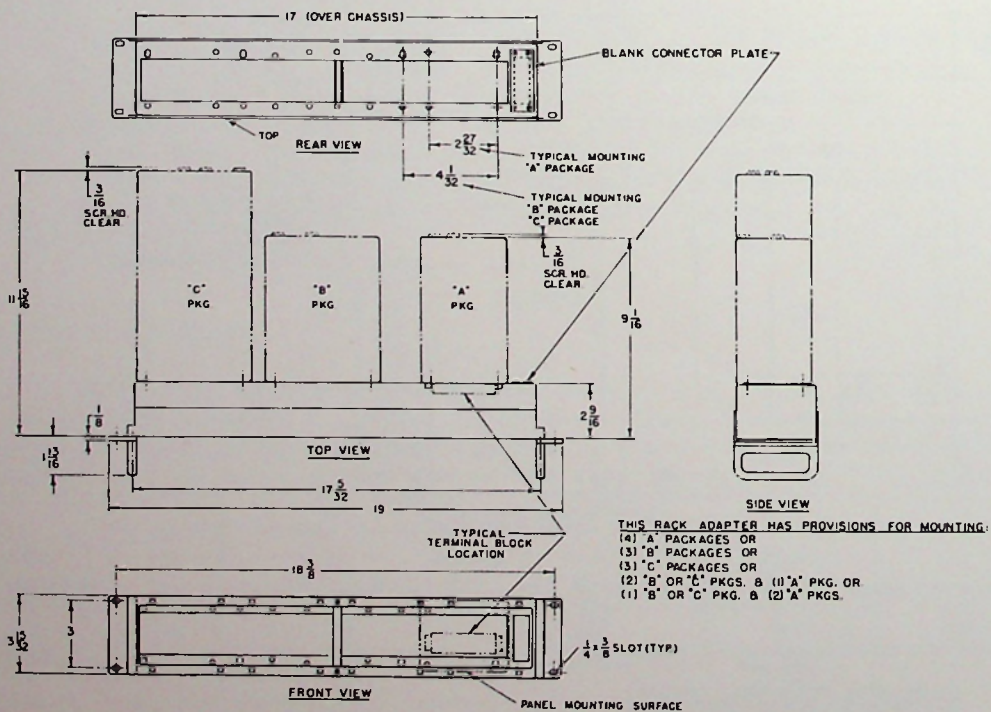


FIGURE 4. RACK ADAPTER LRA-5

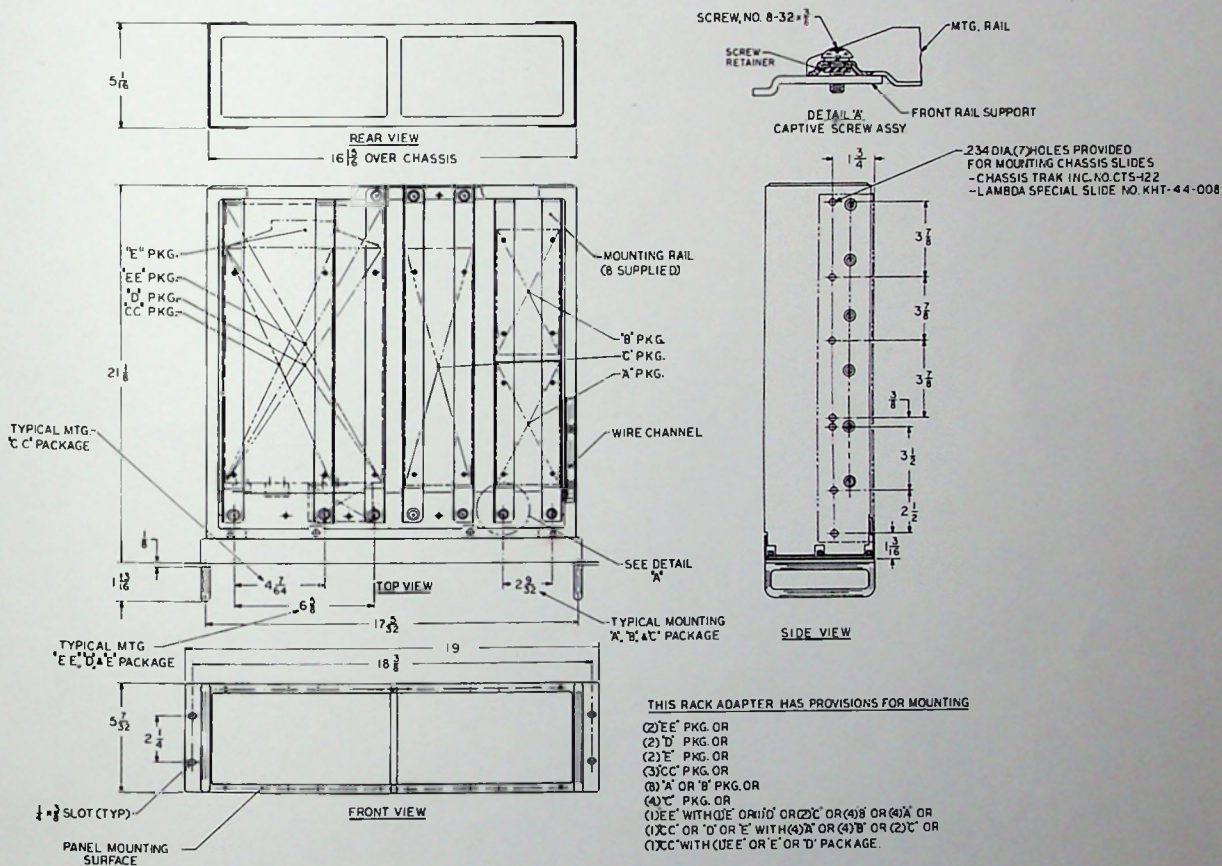


FIGURE 5. RACK ADAPTER LRA-7



5-Year Guarantee

We warrant each instrument manufactured by us, and sold by us or our authorized agents, to be free from defects in material and workmanship, and that it will perform within applicable specifications for a period of five years after original shipment. Our obligation under this guarantee is limited to repairing or replacing any instrument or part thereof, (except tubes and fuses) which shall, within five years after delivery to the original purchaser, be returned to us with transportation charges prepaid, prove after our examination to be thus defective.

We reserve the right to discontinue instruments without notice, and to make modifications in design at any time without incurring any obligation to make such modifications to instruments previously sold.

LAMBDA ELECTRONICS CORP.
515 BROAD HOLLOW ROAD • MELVILLE, L. I., NEW YORK • 516 MYRTLE 4-4200

