

REVOX B77

List of special versions, – suggested applications,
– information
Technical data (standard)/Dimensions



CS model in carrying case. Impact resistant plastic case with wear resistant Nextel coating.



CM model for panel mounting, metal case.



19" rack installation. Required for this is the CM model for panel mounting with metal case plus the 19" adapter kit, article no. 34099 (for B750 and B760 use article no. 34095).

B77 List of Variants

Code	Version	Variant	Tracks			Tape Speeds					Equalization		CS**	CM**
			1	2	4	1 ⁵ / ₁₆	1 ⁷ / ₈	3 ³ / ₄	7 ¹ / ₂	15	NAB	IEC*	Order Nr.	Order Nr.
-	Standard	S2		▲				▲	▲		▲		11102	14302
		S4			▲			▲	▲		▲		11104	14304
HS	High-Speed	S2/**/HS/NAB		▲					▲	▲	▲		11106	14306
		S2/**/HS/IEC*		▲					▲	▲		▲	11108	14308
LS	Low-Speed	S2/**/LS		▲			▲	▲			▲		11453	14454
		S4/**/LS			▲		▲	▲			▲		11451	14447
SLS	Super-Low-Speed	S2/**/SLS		▲		▲	▲				-	-	14502	14500
		S4/**/SLS			▲		▲	▲			-	-	14507	14505
DIA	Dia-Synchro (for impulse type signals)	S2/**/DIA		▲				▲	▲		▲		14122	14702
		S4/**/DIA			▲			▲	▲		▲		14124	14704
		S2/**/HS/NAB/DIA		▲				▲	▲	▲	▲		14705	14706
		S2/**/HS/IEC/DIA		▲				▲	▲	▲		▲	14707	14708
DHA	Dissolve Head Amplifier (for analog- control signals)	S2/**/DHA		▲				▲	▲		▲		14152	14352
		S4/**/DHA			▲			▲	▲		▲		14154	14354
		S2/**/HS/NAB/DHA		▲				▲	▲	▲	▲		14162	14362
		S2/**/HS/IEC/DHA		▲				▲	▲	▲		▲	14163	14363
FH	Free-Head	S2/**/FH		▲				▲	▲		▲		14172	14372
		S4/**/FH			▲			▲	▲		▲		14174	14374
		S2/**/HS/NAB/FH		▲				▲	▲	▲	▲		14182	14382
		S2/**/HS/IEC/FH		▲				▲	▲	▲		▲	14183	14383
DOL	Dolby	S2/**/DOL		▲				▲	▲		▲		14132	14332
		S4/**/DOL			▲			▲	▲		▲		14134	14334
SYNC	Self-Sync	S2/**/SYNC		▲				▲	▲		▲		14112	14312
		S4/**/SYNC			▲			▲	▲		▲		14114	14314
		S2/**/HS/NAB/SYNC		▲				▲	▲	▲	▲		14142	14342
		S2/**/HS/IEC/SYNC		▲				▲	▲	▲		▲	14143	14334
AUTO	Autostart	S2/**/AUTO		▲				▲	▲		▲		14498	14489
		S4/**/AUTO			▲			▲	▲		▲		14499	14488
		S2/**/LS/AUTO		▲			▲	▲			▲		14484	14485
		S4/**/LS/AUTO			▲		▲	▲			▲		14597	14602
		S2/**/SLS/AUTO		▲		▲	▲				-	-	14479	14478
		S4/**/SLS/AUTO			▲	▲	▲				-	-	14477	14475

Other Special Versions may be possible on request

Explanation of Symbols:

- S1** = Full Track (Mono)
- S2** = Half Track (2/2)
- S4** = Quarter Track (2/4)
- * IEC is identical to CCIR
- CS** = Nextel coated plastic case
- CM** = Metal case (for fixed installation)

Speed class ——— Equalization

Designation Sample: S2/CS/HS/NAB/SYNC ——— Short form code for spec. version

Number of tracks ——— Type of case**

B77 Suggested applications

(which recorder is best suited for a particular application)

	STAND	HS	LS	SLS	DIA	DHA	FH	DOL	SYNC	AUTO
Full audio frequency range, excellent high frequency dynamics, easy editing	■	●				● HS		■	● HS	
Best possible dynamic range	■	■						●	■	
To produce Master Tapes for further processing	■	●				● HS		●	■ ● HS	
Extended recording times and low tape consumption			■	●						■ ● LSLS
Multiplay recording technique	■	■						●		
Guide track (self-sync) recording									●	
Manually operated logging (music)	●		■							
Manually operated logging (speech)	■		●	●						
Automatic monitoring (all applications)										●
Slide Presentation with stereo sound 1 Projector, impulse controlled					●					
Slide Presentation , dissolves with two or more projectors or other control functions						●				
Slide presentation or other control functions with external analog or digital electronics.							●			

Explanation of Symbols:

- ideal choice
- well suited

Short form codes for B77 Specials

Short-form code	Version
HS	High-Speed
LS	Low-Speed
SLS	Super-Low-Speed
DIA	Dia-Synchro (for impulse type signals)
DHA	Dissolve Head Amplifier (for analog control signals)
FH	Free-Head
DOL	Dolby
SYNC	Self-Sync
AUTO	Autostart

Technical Data REVOX B77 Standard

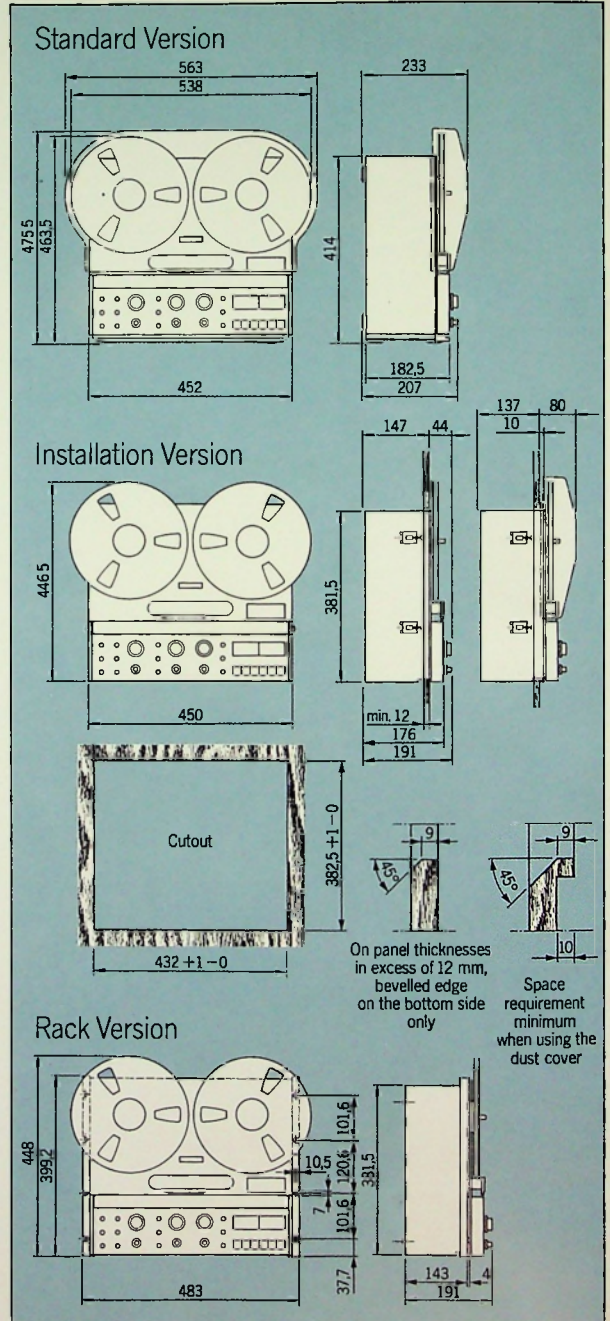
Dimensions (valid for all versions)

STANDARD	
Tape transport mechanism:	3-motor tape drive, 2 AC driven spooling motors, 1 AC driven capstan motor, electronically regulated
Tape speeds:	3 3/4 ips and 7 1/2 ips electronic change over $\pm 0.2\%$
Tolerance from nominal: With external accessory, speed variable	from 2 1/2 ... 11 ips
Wow and flutter: (as per DIN 45507/consistent with IEEE standard 193-1971)	at 3 3/4 ips less than 0.1% at 7 1/2 ips less than 0.08%
Tape slip:	max 0.2%
Reel size:	up to 10.5 inch diameter (min. hub diameter 2.36 inches), tape tension switchable (for small hub diameters)
Winding time:	approx. 135 sec for 3600 ft of tape
Tape transport control:	Integrated control logic with tape motion sensor provides for any desired transition between different operating modes. Contactless electronic switching of all motors. Remote control of all functions and electric timer operation are possible.
Equalization:	3 3/4 ips: NAB 90-3180 μ sec 7 1/2 ips: NAB 50-3180 μ sec
Frequency response: (measured via tape, at -20 VU)	at 3 3/4 ips: 30 Hz ... 16 kHz +2/-3 dB 50 Hz ... 10 kHz ± 1.5 dB at 7 1/2 ips: 30 Hz ... 20 kHz +2/-3 dB 50 Hz ... 15 kHz ± 1.5 dB
Peak recording level:	514 nWb/m corresponds to 6 dB above 0 VU
Level metering:	VU meter as per ASA standard with LED peak level indicators
Distortion:	at 0 VU at 0 VU + 6 dB (nWb/m) (257) (514) at 3 3/4 ips <1% <2.5% at 7 1/2 ips <0.6% <1.5%
Signal to noise ratio: (weighted as per ASA-A, measured via tape)	Half track: at 3 3/4 ips >64 dB at 7 1/2 ips >67 dB Quarter track: at 3 3/4 ips >60 dB at 7 1/2 ips >63 dB
Crosstalk: (at 1000 Hz)	Stereophonic: >45 dB Monophonic: >60 dB
Erase depth:	at 7 1/2 ips better than 75 dB
Inputs per channel:	MIC (unbalanced). Position LO : 0.15 mV/2.2 kohms for 50 ... 600 ohms microphones Position HI : 2.8 mV/110 kohms for microphone impedances up to 20 kohms RADIO : 2.8 mV/20 kohms AUX : 40 mV/220 kohms
Overload margin on all inputs:	40 dB (1 100)
Outputs per channel: (level at 6 dB above 0 VU/514 nWb/m)	OUTPUT : 1.55 V, internal resistance 390 ohms adjustable with preset control, max. attenuation -26 dB (R _i max 1.5 kohms) RADIO : 1.55 V, internal resistance 4.7 kohms adjustable with preset control, max. attenuation -26 dB PHONES : (2x) max. 5.6 V, internal resistance 220 ohms, short-circuit proof, optimum matching impedance 200 ... 600 ohms
Connectors for:	Remote control of tape transport functions. Remote control of variable tape speed. Slide projector of crossfade unit (electronics optional)
Semi-conductor complement:	11 IC, 1 opto-coupler, 4 Triac, 61 transistors, 30 diodes, 5 LED, 3 full wave rectifiers, 3 relays
Electric current supply: (voltage selector)	100, 120, 140, 200, 220, 240 V 50 ... 60 Hz, max. 80 watts
Mains fuse:	100 ... 140 V: 1 A slow-blowing 200 ... 240 V: 0.5 A slow-blowing
Weight:	approx. 37 lbs 7 ozs (17 kg)
Dimensions:	17.8 x 16.3 x 8.14 inches (452 x 414 x 207 mm) (W x H x D) Required clearance for 10.5 inch reels: max width: 21.2 inches (538 mm) max height: 18.25 inches (463.5 mm)

Capstan Motor Specifications:

Capstan shaft diameter:	177.5 mil (4.51 mm)
Type of Motor:	Standard
Nominal motor speeds:	400 and 800 rpm
Speed control circuit:	Standard

All figures quoted are minimum performance values as measured with REVOX 621 mastering tape normally exceeded by all units.



Worldwide Distribution: REVOX ELA AG
Allhardstrasse 146, CH-8105 Regensdorf-Zurich, Switzerland

We reserve the right to make alterations as technical progress may warrant.
Printed in Switzerland by WILLI STUDER 18 483 680 Copyright by WILLI STUDER,
CH-8105 Regensdorf-Zurich, Switzerland