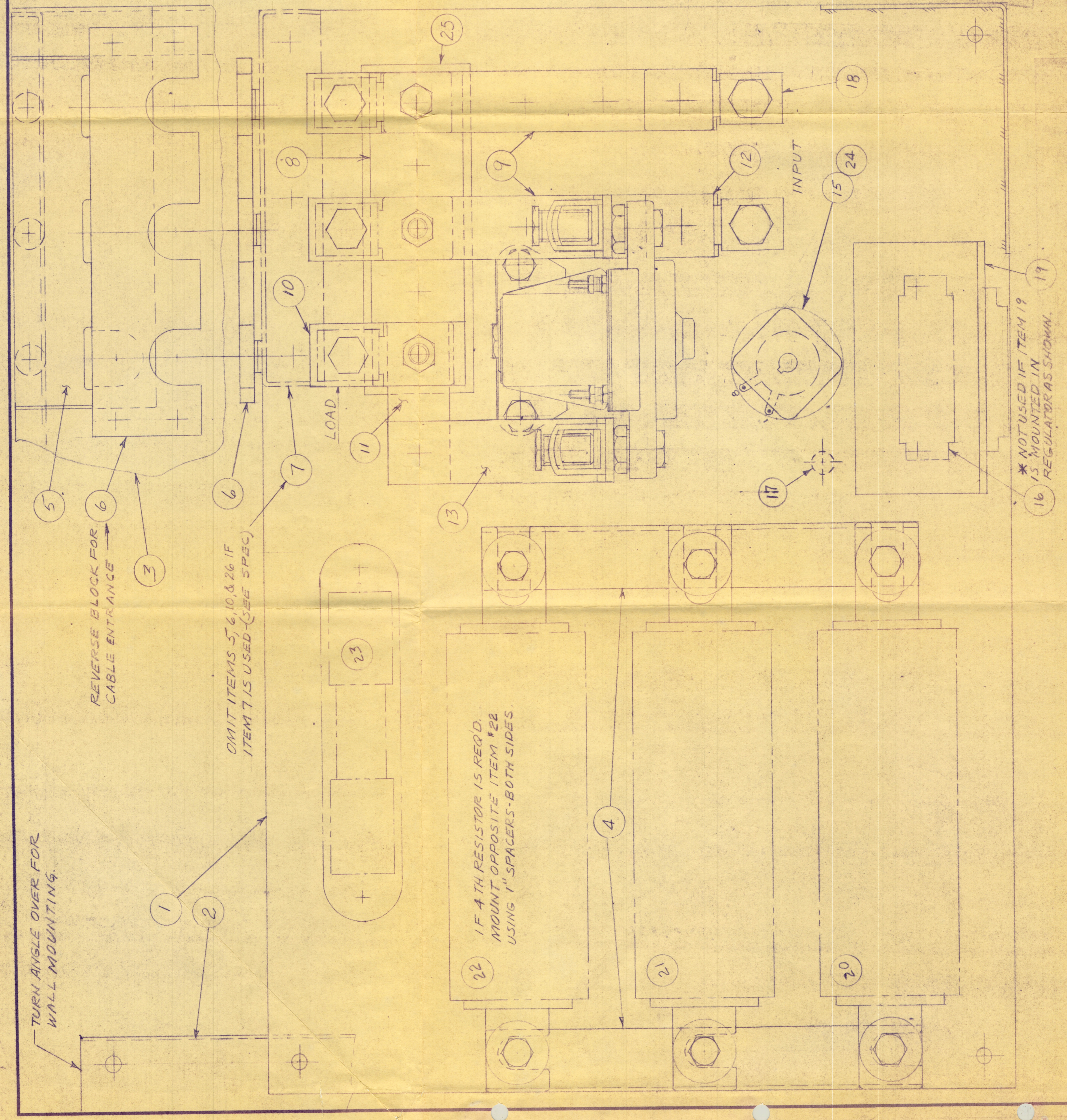


ITEM PART NO	NO REQD	DESCRIPTION	
1	KBC-450	1	BASE PAN ASS'Y.
2	KBC-452	1	INSTR MOUNTING ANGLE
3	KBC-457	1	COVER
4	JA-184	2	RESIST. MTG. BKT.
5	JA-182	1	BUS SUPPORT
6	JA-183	1	CABLE CLAMP
7	JA-181	1	KNOCKOUT PL. (OPTIONAL)
8	JA-185	1	TERMINAL BLOCK
9	JA-186	2	BUS BAR
10	JA-187	1	BUS BAR
11	JA-188	1	BUS BAR
12	JA-189	1	BUS BAR
13	JA-190	1	BUS BAR
14	JR-83	1	CONTACTOR
15	JR-173	1	RELAY 24V. SPST, ENCL.
16	JL-97	1	TERM. STRIP #6-140
17	SEE SPEC	1	DROPPING RESISTOR (IF REQ'D)
18	JH-1042	1	LUG - ILSCO #XT4-D (#6-4/0)
19	SEE SPEC	1	LOW VOLTAGE ALARM UNIT
20	"	"	RESISTOR
21	"	"	"
22	"	"	"
23	"	"	LOAD SHUNT (IF REQ'D)
24	JL-165	1	SOCKET-OCTAL POM. X5-8
25	JA-204	1	INSULATOR
26	JTA-205	3	BUS BAR - OUTPUT CONN.



FOR SCHEMATIC DIAGRAM
SEE KBC-479
PARTS LIST JBC-49

NO.	DATE	BY	REVISION
A	10/26/64	BS	JR-173 WAS JR-36; JL-165 WAS JL-337

C & O BATTERIES
of Benshaw, Inc.
DIV. THE ELECTRIC AUTOLITE CO.

**ARRANGEMENT - LOAD
REGULATOR - UNIVERSAL
TYPE 30-150A**

DRAWN BS
CHECKED
DATE 4-13-62
SCALE FULL

APPROVED
DRAWING NO. **MBC-203**

* NOT USED IF ITEM 19
15 MOUNTED IN
REGULATOR AS SHOWN.