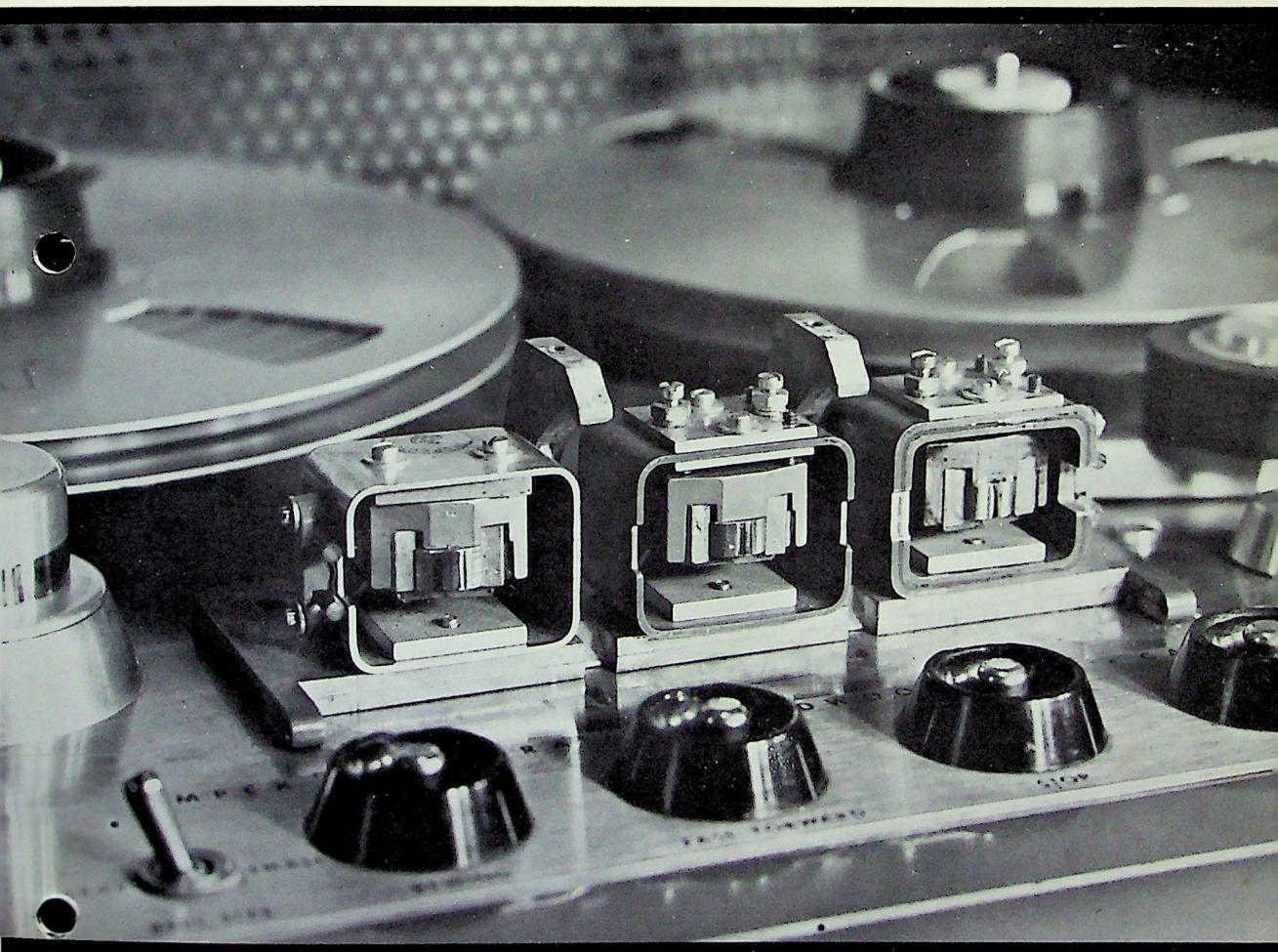


# **TABER** MANUFACTURING AND ENGINEERING COMPANY

- \* New Audio Heads for direct replacement in Ampex and Scully equipment.
- \* Precision lapping of Ampex and Scully Audio Heads
- \* Custom Audio Heads





## TABER IS A WORLD-WIDE SUPPLIER TO MAJOR PROFESSIONAL RECORDING MARKETS

Taber Manufacturing and Engineering Co., founded in January 1959, has since its formation been a prime supplier of replacement audio heads to major broadcast and recording facilities, world-wide. Network broadcasting stations and key independents—as well as the largest government facilities—have relied on Taber for all head repair and replacement work required to maintain Ampex and Scully professional equipment.

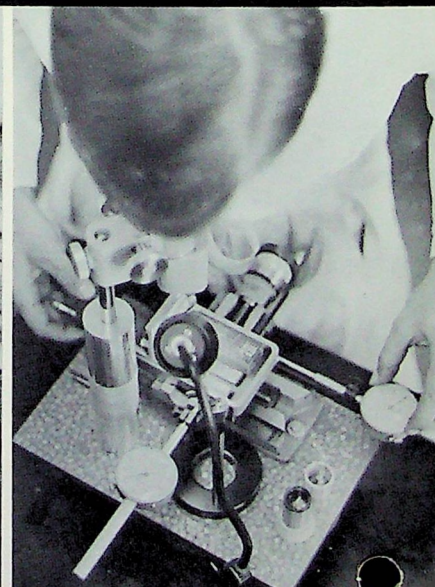
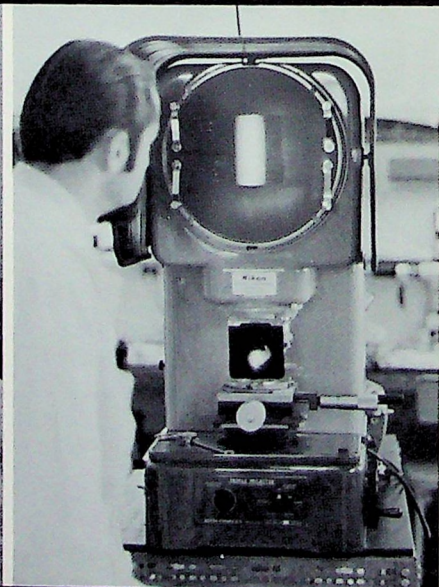
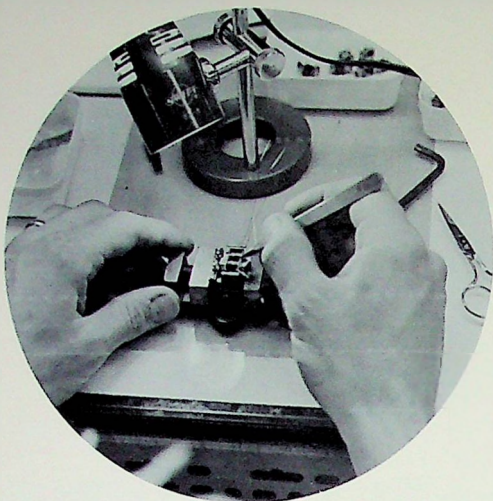
## TABER MANUFACTURES SPECIAL PURPOSE HEADS AND HEAD ASSEMBLIES

Leading tape manufacturers have specific needs for special heads for their R & D and evaluation programs. Taber Manufacturing supplies several leading tape-makers with special heads requiring unique or proprietary pole piece structure, gap lengths, or differing electrical design. The head assemblies employed by Standard Tape Laboratory are made by Taber Manufacturing and Engineering Company.

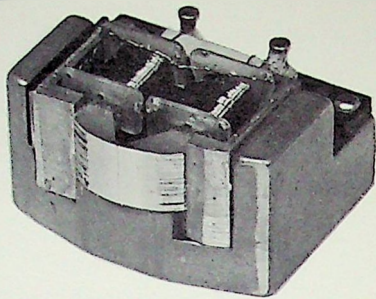
## TABER IS RECOGNIZED INTERNATIONALLY FOR HEAD DESIGN EXCELLENCE

Taber heads, manufactured for use in Ampex and other professional machines, exhibit an efficiency factor greater than that of the original design of equipment manufacturers. The Taber pole piece design affords a definite improvement, both as to output signal and signal-to-noise characteristics. Exact-ing laboratory care, including the finest optical and electrical instrumentation, enables Taber to provide a perfect head stack.

Newly-designed tooling enables Taber to stack the head laminations with such a high degree of accuracy that we *guarantee* longer wearing heads. Less material is polished away in the finishing process due to greater gap-depth. A new Taber head can be expected to have a gap-depth of 27 thousandths, as compared to a 21 to 23 thousandths usually found in the average professional head. The lamination material used by Taber is moly permalloy, containing a high nickel content, thereby assuring a long-wearing surface.







**AMPEX TYPE FULL TRACK  
REPRODUCE HEAD**



**PHOTO MICROGRAPH  
SHOWING GAP DEPTH**

#### **NEW HOME FOR TABER AND S.T.L.**

1970 marked the move of both Taber Manufacturing and Engineering Company and Standard Tape Laboratory into new corporate headquarters, including offices and laboratories. The new facilities—located in Adams Industrial Park in San Leandro, California—are at 2081 Edison Avenue, in close proximity to Oakland International Airport with its air shipping facility.

#### **SHIPPING INSTRUCTIONS**

When sending your assembly to Taber for either refurbishing service or to have new heads installed, be sure to package it well to avoid damage in transit. Make sure it is carefully labeled. Whenever possible, the model number of the AmpeX VTR machine in which the VTR audio assembly is to be used should be mentioned.

If shipped via U.S. Mail, address it to: P.O. Box 2365, Oakland International Airport, Oakland, California 94614.

If shipped via private carrier, address it to: 2081 Edison Avenue, San Leandro, California 94577.

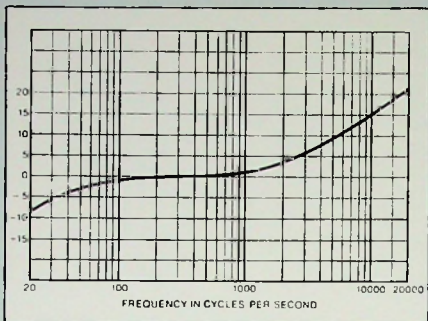
#### **CLIENTS SERVED BY TABER**

The White House, Washington, D.C.  
American Broadcasting Company  
Columbia Broadcasting System  
National Broadcasting Company  
General Recorded Tape  
Disneyland  
Radio Corporation of America  
RKO General  
Kaiser Broadcasting Company  
Memorex  
Metromedia  
Voice of America

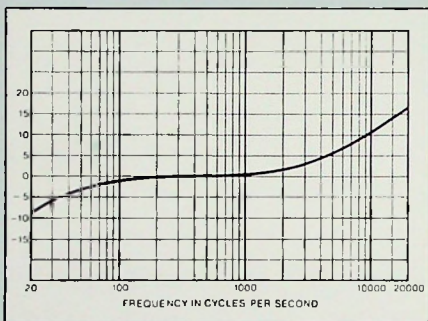


**STANDARD REPRODUCING  
CHARACTERISTICS FOR  
MAGNETIC SOUND RECORDING**

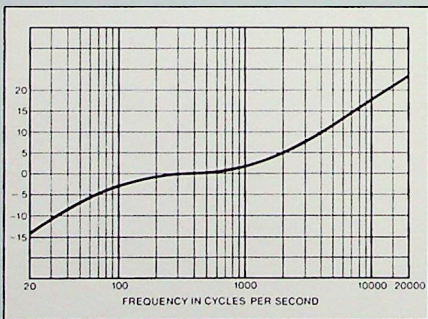
Reproducing Output for Constant Flux in  
the core of an Ideal Reproducing Head



3.75 ips 90 microsecond



7.5 ips and 15 ips 50 microsecond



1 7/8 cassette 120 microsecond

**STANDARD TAPE LABORATORY**



**PRECISION**

# MAGNETIC TEST TAPES

STL Test Tapes are recorded directly from precision generating equipment to provide the most accurate Azimuth reference possible — thanks to Standard Tape Laboratory's exclusive production techniques.

An independent standards laboratory, STL provides a completely objective service, with test tapes available to major manufacturers, governments, and all who need a precision reference tool.

**REPRODUCE ALIGNMENT TAPES AND FILMS**

	Catalog Number	Speed	Characteristics
Width 1/4"	°1	3.75 ips	90 microsecond Full Track
	"2	7.5 ips	50 microsecond Full Track
	°3	15 ips	50 microsecond Full Track
	†4	30 ips	17.5 microsecond Full Track
Width 1/2"	°5	7.5 ips	50 microsecond Full Track
	"6	15 ips	50 microsecond Full Track
	†7	30 ips	17.5 microsecond Full Track
Width 1"	°8	7.5 ips	50 microsecond Full Track
	°9	15 ips	50 microsecond Full Track
16 mm full coat magnetic film	10	36 ft/min	SMPTÉ edge track
150 mil cassette format	11	1 7/8 ips	RIAA and Phillips standard full track (specify either on cassette or on reel)

\*NAB Equalization

†Industry Standard for 30 ips

For more information, write or call:

**TABER MANUFACTURING AND ENGINEERING CO., INC.**

OAKLAND INTERNATIONAL AIRPORT  
P.O. BOX 2365 - OAKLAND, CALIFORNIA 94614

Shipping address: 2081 EDISON AVENUE  
SAN LEANDRO, CALIFORNIA 94577

Telephone: (415) 635-3832

# TABER MANUFACTURING AND ENGINEERING COMPANY

OAKLAND INTERNATIONAL AIRPORT • P.O. BOX 2365 - OAKLAND, CALIFORNIA 94614 • Telephone: (415) 635-3832

## PRICES

### NEW HEADS IN YOUR AMPEX ASSEMBLY

For models 300, 350, 351 and 400 (352 single head assembly).  
Includes installation and complete alignment, thorough cleaning  
of all assembly parts, and replacement of glass guides.

THREE NEW FULL TRACK HEADS INSTALLED .....	\$ 97.50
THREE NEW HALF TRACK HEADS INSTALLED .....	\$110.00
ONE NEW HEAD IN YOUR ASSEMBLY.....	\$ 40.00
NEW TWO-TRACK HEADS.....	Each \$ 70.00
THREE NEW TWO-TRACK HEADS INSTALLED .....	\$210.00

### NEW HEADS IN YOUR SCULLY ASSEMBLY FOR MODELS 280, 280-2, 270 AND 275

THREE NEW FULL TRACK HEADS INSTALLED .....	\$105.00
THREE NEW HALF TRACK HEADS INSTALLED .....	\$105.00
ONE NEW HEAD IN YOUR ASSEMBLY.....	\$ 75.00
THREE NEW TWO-TRACK HEADS INSTALLED .....	\$225.00

All Scully head prices subject to change.

### DUPLICATOR HEADS

Half Track Heads feature support shoe for even wear.

#### FOR AMPEX 3200 DUPLICATORS

##### TWO NEW HEADS IN YOUR ASSEMBLY

Master reproduce assembly .....	\$ 90.00
(Upper half track, lower half track)	

##### THREE NEW HEADS IN YOUR ASSEMBLY

Slave record assembly.....	\$135.00
(full track, upper half, lower half)	

### AUDIO HEADS FOR AMPEX VIDEO TAPE RECORDERS

Complete rebuilding of your assembly, including four new heads ..... \$310.00  
In cases where the assembly doesn't require replacement of all four heads,  
the following prices will apply:

Each New Head Installed .....	\$ 77.50
Each Head Reconditioned .....	\$ 25.00

For each assembly with monitoring head column, if lapping is needed,  
an additional charge of..... \$ 25.00

### RECONDITIONING OF AUDIO HEADS FOR AMPEX VIDEO TAPE RECORDERS

Lapping two audio track 1 heads and two cue .....	\$100.00
Lapping two audio track 1 heads and two cue and monitor stack .....	\$125.00
Lapping two audio track 1 without cue .....	\$ 80.00

### HEAD ASSEMBLY RECONDITIONING SERVICE

Includes the replacement of worn or grooved heads, new glass guides and  
refinishing of assembly cover. Reconditioned head assemblies are subjected to the  
same quality control testing as new head replacements.

NOTE: All worn heads cannot be reconditioned. However, we will perform  
this service whenever head condition permits.

#### FOR THE 475 TYPE ASSEMBLY

(Used on 300, 350, 351 and 400 Ampex Recorders)

FULL OR HALF TRACK ASSEMBLY .....	\$ 45.00
TWO-TRACK STEREO ASSEMBLY .....	\$ 60.00

#### FOR THE SCULLY 280 MODEL ASSEMBLY

FULL OR HALF TRACK ASSEMBLY .....	\$ 45.00
TWO-TRACK STEREO ASSEMBLY .....	\$ 60.00

Reconditioning multi-channel heads. Per channel .....

\$ 10.00
----------

● A LOANER ASSEMBLY WILL BE PROVIDED UPON REQUEST